

Groves Nurseries and Garden Centre

Established 1866

Plant Catalogue 2012



146 Years of Service

Established 1866

Welcome to our 2012 catalogue.

Here we are in another spring and it's all systems go in the garden again. And this year we are all getting our gardens geared up for a very British summer with the Queens Diamond Jubilee and Olympic Games sure to bring out the red, white and blue in us all. We'll have plenty of appropriately coloured bedding plants, as well as Union Jack napkins, sandwich flags and even tinsel for the perfect patriotic garden party.

We had another action packed year last year at both of our nurseries and garden centre, which included refurbishing our house plant area to give a new, fresh feel for your favourite indoor plants. Early this spring you will also have noticed that the fish in our koi carp pond went on holiday while the pond was emptied, re-lined and re-planted. They are now back and happily swimming around in their new paradise.

Charlie and myself had a nerve racking trip up to Birmingham for the Best Garden Centre Awards, where we were delighted to find out that we had received the Best mid sized garden centre in the country as voted for by the public, so thank you very much again for your votes. Our plant area sales team also picked up best team in the south west, which was brilliant.

Our plantsmen and women have been busier than ever, with a mass 'pot on' in the autumn and winter when we had fun potting & pruning over 7000 roses, thousands of perennials, hundreds of soft fruit as well as hundreds of ornamental and fruit trees. This all takes place at our nursery, which ensures we can keep their costs down and our staff expertise up.

We continue to run events through the year & had our first ever Violet weekend this February. We will of course also have our hanging baskets planting demo weekends, pruning workshops, as well as attending a variety of shows though the summer & autumn.

Technology continues to push our business into the 21st century with our activities recorded on our facebook page, day by day commentary by Charlie on Twitter, our ever increasing online shop, Dad recording 'How to..' videos on You Tube and we have even now installed 'Groves TV' at the tills and in the restaurant, so you can catch up on the latest jobs to do in your garden while you wait to be served or have a cuppa!

We would like to thank you for your custom over the last year and hope you enjoy your visit to our garden centre & nurseries, whether it is in person or via the internet.

Best wishes for the patriotic gardening year ahead!

Becky Groves

Nursery Manager, C.W Groves and Son Ltd.

CATALOGUE PRICES 2012

INDEX

Business Terms	1
Climbers and Wall Shrubs	13-15
Composts, peat, mulches	31
Conifers.....	11
Directions/Location.....	12 & 33
Fruit Trees.....	16-19
Fruit, Soft.....	20-21
Gift Tokens	32
Grasses	11
Herbs	31
Hedging.....	15
Lawn Grass	32
Opening Times	33
Perennials.....	24-27
Postage, Carriage and Packing.....	1
Roses	23
Shrubs	2-6
Spring Bedding Plants.....	27-28
Trees (Ornamental)	7-11
Vegetable Plants	29-30
Violets	22

GENERAL INFORMATION & CONDITIONS OF SALE

- Groves Nurseries is privately owned business and has been in the family for 146 years.
- We have Groves Garden Centre with its own nursery on West Bay Road in Bridport, Dorset and a smaller sister nursery with small garden shop 'Little Groves Nursery' on Tunnel Road in Beaminster, Dorset.
- Most of our plants are container grown, so can be planted at any time of the year. From November to March we do however have a selection of bare rooted fruit trees and hedging plants which give the opportunity for very competitive prices.
- **WEBSITE:** If you live too far away to pay a visit to either of our nurseries, we have a great, ever growing website (www.grovesnurseries.co.uk) and excellent facilities for sending by post or national carriers. We sell a large range of goods including violets, roses, herbs, onion sets, seed potatoes, seeds, bulbs as well as many garden sundries.
- **Acceptance of Orders.** Our aim is to give satisfaction; we do our best to see that goods leave our nursery in good condition, but their future well-being depends so much on soil, position, planting, after-care and weather conditions that **we cannot accept responsibility for failures, and therefore cannot replace.** If receiving your purchase by post, on arrival, if you are dissatisfied, please inform us and return the consignment at once.
- We take every care to ensure that goods are true to name, but we do not guarantee. Should there be a mistake, we will gladly replace.
- Prices quoted in this catalogue are a guideline and are not binding, as so much depends on size and quality. We reserve the right to alter prices if necessary.
- **DELIVERIES:** When and where possible we deliver larger orders by road in our own vans for which a charge is made according to distance. Bridport delivery – orders of £5.00 and upwards are delivery free, small orders of less than £5.00 a small handling charge of 50p will be made. Please ask for delivery costs to surrounding areas.
- **POSTAGE & PACKAGING** on plants and other goods being sent by post is added as an extra at cost. This varies so much with different types of plants and goods that we find it best treat each order individually, but most plants are £5.99 per parcel. We generally charge for the whole consignment on despatch with your credit/debit card details.
- **V.A.T.** All prices inclusive of 20% V.A.T. Fruit, vegetable and herb sections are zero-rated.
- **PRICES SUBJECT TO ALTERATION.** The prices in this catalogue are as accurate as possible at the time of print, but are best used as a guide. Please enquire for current availability and prices.
- Any goods purchased from us will remain the property of C. W. Groves & Son Ltd until paid for.

ORNAMENTAL SHRUBS

The number after each name indicates the approximate ultimate height in feet.

(e) indicates Evergreen

p.o.a. = price on application.

As well as those listed below, we have a large range of shrubs in 1L sized pots, which are sold as £3.99 each or 3 for £11, as well a good range of more mature shrubs in 10 - 20ltr.pots.

	Pot size	Price
(e) ABELIA grandiflora (5) Pale pink flowers in profusion throughout the summer.	2L	£6.50
(e) ABELIA Francis Mason (5) Golden variegated form.	3L	£6.50
ACER palmatum atropurpureum (12) (Bush) Coppery crimson foliage.	3L	£21.99
ACER palmatum Dissectum ornatum (6) fine coppery-red leaves.	3L	£21.99
ACER palmatum dissectum (6) Fine, green leaves.	3L	£21.99
ACER palmatum Bloodgood (12) Purple leaves turn scarlet in autumn	3L	£21.99
Other varieties of Acer often available, please ask		
AMELANCHIER lamarkii (also see tree section). Mass of white flowers April	3L	£10.25
(e) ARALIA japonica (Fatsia) (7). Great foliage plant with white flower in autumn	3L	£9.25
(e) ARBUTUS unedo (6) Strawberry tree. Beautiful evergreen with strawberry-like fruit in autumn.	3L	£9.50
(e) AUCUBA japonica Crotonifolia (9) (Male) Finely speckled leaves.	3L	£7.99
(e) AUCUBA japonica Variegata (7) Variegated Laurel (Female) Red berried if male is present.	3L	£7.99
(e) AZALEA (2) Dwarf Japanese Evergreens. Low spreading shrubs.		
April flowering pink ,red, white and magenta. Need ericaceous soil.	3L	£8.75
(e) BAMBOOS . In variety.		POA
(e) BAY, SWEET (Laurus nobilis) (20) Aromatic Evergreen. Also available as standards.	3L	£6.99
(e) BERBERIS darwinii (6) Orange flowers, small glossy leaves.	3L	£6.99
BERBERIS thunbergii Rose Glow (4) Purple leaves, pink shoots, early summer.	3L	£6.99
BERBERIS thunbergii Atropurpurea (4) Bright scarlet leaves in summer.	3L	£6.99
BERBERIS thunbergii Atropurpurea Nana (1.5) Purple leaves.	2L	£6.99
(e) BERBERIS stenophylla (10) Green leaves, orange/yellow flowers.	3L	£6.99
BRACHYGLOTIS greyi (Senecio) Sunshine (3) Yellow flowers, grey leaves.	2L	£6.25
BROOM (see Cytisus)		
BUDDLEIA alternifolia (9) Soft purple flowers. June.	3L	£7.99
BUDDLEIA davidii Black Knight (9) The deepest purple of all.	3L	£6.75
BUDDLEIA davidii Pink Delight (12) Bright pink flowers, orange eye. Jul-Sept	3L	£6.75
BUDDLEIA davidii Royal Red (9) Brilliant royal purple	3L	£6.75
BUDDLEIA davidii Harlequin (Royal red variegated) (6) Striking yellow margined leaves	3L	£6.75
BUDDLEIA davidii White Profusion (8) Long white panicles.	3L	£6.75
BUDDLEIA globosa (15) Orange balls. May flowering.	3L	£6.75
(e) BUXUS sempervirens Common box hedging or shaping.	2L	£5.99
(e) BUXUS suffruticosa , dwarf box hedging. (Also see hedging section)	2L	£5.99
(e) CALLISTEMON Linearis (Australian Bottlebrush) (8) Scarlet flowers, magnificent evergreen.	3L	£8.50
(e) CAMELIAS (12) Red, pink, and white (double or single). Need ericaceous soil.	3L	£14.99
CARYOPETERIS clandonensis (3) Blue flowers in late summer.	3L	£6.99
(e) CEANOTHUS Autumnal Blue . (10) Glossy leaves. Summer flowering.	3	£7.75
(e) CEANOTHUS Blue Mound (4) Bushy, spreading habit, flowering May.	3	£7.75
(e) CEANOTHUS Concha (9) dark blue flowers in late spring, dark green leaves	3	£7.75
CEANOTHUSx delileanus Gloire de Versailles (10) Soft powder-blue.	3	£7.75
(e) CEANOTHUS grisues Yankee Point (6) Large leaves, blue flowers (May-June).	3	£7.75
CEANOTHUS impressus Puget Blue . (9) Dense habit. Deep blue flowers. May.	3	£7.75

	Pot size	Price
CEANOTHUS thyrsoflorus Skylark (4) Dark blue flowers in late spr.earlysum	3	£7.75
CEANOTHUS thyrsoflorus repens (3) shapely mounds of blue flowers in May	3	£7.75
(e) CEANOTHUS veitchianus. (7) Bright blue, spring flowering.	3	£7.75
(e) CEANOTHUS Zanzibar. (4) Yellow leaves splashed with green, blue flwrs in spr	3	£9.50
CERATOSTIGMA willmottianum (hardy Plumbago) (3) Hardy, blue flowers.	2L	£7.25
CERCIDIPHYLLUM japonicum (Katsura) (16) Heart shaped leaves turn pink and smell of candyfloss in autumn.	3L	10.99
CERCIS siliquastrum (The Judas Tree) (10) Rosy-purple flowers in May.	3L	£8.50
CHAENOMELES (Cydonia) - see Climbers and Wall Shrubs.		
(e) CHOISYA ternata (Mexican Orange) (6) Clusters of white scented flowers in May	2L	£7.75
(e) CHOISYA ternate Sundance. Attractive golden foliage form of Ternata.	3L	£8.75
(e) CHOISYA Aztec Pearl (5) Compact evergreen bush with white scented flower early summer.	3L	£8.75
(e) CISTUS argenteus Silver Pink (3) Lovely grey leaved shrub, soft pink flowers.	2L	£6.99
(e) CISTUS x dansereaui Decumbens. (3.5) White saucer shaped flowers in summer	2L	£6.99
(e) CISTUS pulverulentus (crispus) Sunset (2) Bright rose-pink flowers in summer	2L	£6.99
(e) CISTUS purpureus. (4) Reddish-purple, chocolate blotch.	2L	£5.50
(e) CONVOLVULUS cneorum (2.5) Silver leaves, pink and white flowers.	2L	£7.25
(e) CORDYLINE australis (15) Semi-hardy Palm. Various colours available.	3L	£9.99
CORNUS (Dogwood) alba Elegantisima (8) Silver striped foliage, red twigs.	3L	£6.99
CORNUS alba Kesselringii (7) Dark purple - black stems, green leaves	3L	£6.99
CORNUS alba Spaethii (8) Variegated golden foliage, red twigs.	3L	£6.99
CORNUS alba Sibirica (Westonbirt) (7) Red stems, blue berries.	3L	£6.99
CORNUS sanguinea Midwinter Fire (4). Orange-red stems in winter	3L	£6.99
CORNUS stolonifera Flaviramea (7) Yellow bark, decorative in winter.	3L	£6.99
CORYLUS Contorta (Corkscrew Hazelnut) (8). Great winter structure	3L	£13.50
COTINUS coggygria Golden Spirit (Smoke Bush) (6) golden yellow leaves with a haze of flowers-June – late summer.	3L	£11.50
COTINUS coggygria Royal Purple (6) The red leaved smoke plant.	3L	£11.50
(e) COTONEASTER frigidus cornubia (15) Bunches of scarlet berries in winter.	3L	£6.25
(e) COTONEASTER dammeri Creeping variety, red berries.	3L	£6.25
(e) COTONEASTER franchetti (8) Grey leaves, orange berries.	3L	£6.25
(e) COTONEASTER horizontalis (3) Orange-red fruit, flat growth, will reach 8ft on a wall.	3L	£6.25
(e) COTONEASTER microphyllus (2) Excellent trailer, crimson berries.	2L	£6.25
COTONEASTER simonsii (10) Orange fruit, widely planted for hedges.	3L	£6.25
(e) CRINODENDRON hookerianum (7) Bright crimson lantern-like flowers May-June. Ericaceous.	3L	£8.99
CUPRESSUS – See Hedging Section		
CYTISUS Mix of varieties available in yellow, orange and red.	3L	£6.99
(e) DAPHNE odora aureomarginata (3) Fragrant, pink flowers, marginal silvery leaves (other Daphne's are often available in season)	3L	£20.50
DEUTZIA compacta (6) Fragrant white flowers in June - July	3L	£6.99
DEUTZIA elegantissima 'Magician' (6) Masses of deep pink & white flowers in late spring.	3L	£6.99
(e) ELAEAGNUS ebbingei (9) Tough ,coastal evergreen. Small scented flowers in autumn	3L	£8.25
(e) ELAEAGNUS ebbingei Limelight (9) Golden leaves with a green edge, silvery beneath. Suitable for coastal areas.	3L	£8.25
(e) ELAEAGNUS pungens maculata (8) Striking yellow and green leaves.	3L	£8.25

	Pot size	Price
(e) ELEAGNUS pungens variegata (5) Green leaves with a golden edge	3L	£8.25
(e) ERICA (Hardy Heathers) Various Lime tolerant varieties available	9cm	£1.99
(e) ESCALLONIA Apple Blossom (3) Phlox-pink. Glossy foliage.	3L	£6.99
(e) ESCALLONIA Donard Radiance (6) Large bright pink flowers. Compact.	3L	£6.99
(e) ESCALLONIA Donard Seedling (5) Pale pink. Scented.	3L	£6.99
(e) ESCALLONIA Iveyi (7) White flowering.	3L	£6.99
(e) ESCALLONIA rubra Crimson Spire (7) Red. One of the best.	3L	£6.99
(e) ESCALLONIA rubra macrantha (6) Rosy-red, seaside hedge (Also see hedging)	3L	£6.99
(e) EUCALYPTUS gunnii (15) Beautiful grey/blue foliage.	3L	£8.50
EUONYMUS alatus 'compactus' (3) Leaves turn vibrant scarlet colour in autumn	2L	6.99
EUONYMUS europeus (Spindle tree) (8) Leaves turn blazing scarlet in autumn	2L	£8.25
(e) EUONYMUS fortunei Emerald 'n Gold (1) Intense colourings, prostrate form.	2L	£6.25
(e) EUONYMUS fortunei Emerald Gaiety (1) Silver variegated prostrate form.	2L	£6.25
(e) EUONYMUS japonicus (8) Green glossy leaves, ideal for seaside.	2L	£6.25
(e) EUONYMUS japonicus Ovatus Aureus (6) creamy yellow variegated foliage. Best in sun.	2L	£6.25
EUONYMUS microphyllus variegata (3) Small green leaves edged with white	2L	£6.25
FORSYTHIA Fiesta (4) Leaves mottled green & yellow. Yellow flowers in spring	3L	£6.85
FORSYTHIA intermedia Lynwood (6) Large flowered, compact yellow.	3L	£6.85
(e) FREMONTEDENDRON californicum – see Wall Shrubs & Climbers.		
FUCHSIA Alice Hoffman (1.5) Pink & white flowers, bronze leaves. Hardy.	2L	£5.99
FUCHSIA Garden News (1.5) Salmon pink & magenta, double flowers. Hardy.	2L	£5.99
FUCHSIA Genii (3) Cerise & purple flowers, yellow – green foliage. Hardy	2L	£5.99
FUCHSIA Lady Boothby (10) Hardy. Climbing fuchsia. Pink and purple, flowers.	2L	£5.99
FUCHSIA Lena (3) Hardy. Large flowered violet and white.	2L	£5.99
FUCHSIA Mrs. Popple (3) Hardy. Crimson and purple. Large flowered.	2L	£5.99
FUCHSIA Tom Thumb (1) Dwarf, hardy fuchsia. Violet and pink flowers	2L	£5.99
FUCHSIA magellanica Madame Cornelissen (6) Red & white flowers	2L	£5.99
FUCHSIA magellanica Riccartonii (6) Hardy. Crimson and purple. Good hedger.	2L	£5.99
FUCHSIA magellanica Versicolor (Variegated) (3) Hardy. Pretty variegated foliage, small purple flowers.	2L	£5.99
(e) GARRYA elliptica – see Wall Shrubs and Climbers.		
(e) GRISELINIA littoralis (8) Superb evergreen shrub, ideal for coastal areas	3L	£7.99
(e) GRISELINIA littoralis variegata (6) Golden edged leaves.	3L	£7.99
HAMAMELIS mollis (Witch Hazel) (10) Fragrant yellow flowers.	3L	£21.75
(e) HEATHERS – see Ericas.		
(e) HEBE - A variety of Hebe's are available in different sizes	2L	From £6.25
HIBISCUS syriacus Blue Bird (8) Single blue in late summer	3L	£13.75
HIBISCUS syriacus Chiffon White (5) White semi- double flowers, late summer	3L	£13.75
HIBISCUS syriacus Chiffon Blue (5) Blue, semi- double flowers, late summer	3L	£13.75
HIBISCUS syriacus Woodbridge (8) Rosy red, large, single flowers in late summer	3L	£13.75
(e) HOLLY - ILEX altaclerensis Golden King (10) Female.	3L	£8.75
(e) HOLLY - ILEX aquifolium J.C. Van Tol. (15) Thornless and self-pollinating.	3L	£8.75
(e) HOLLY - ILEX aquifolium Silver Queen (8) Male.	3L	£8.75
HYDRANGEA macrophylla Hortensias (Mopheads) (4) The popular garden variety. White, blue, red, pink. Lacecap hydrangea also available.	3L	£6.99
HYDRANGEA macrophylla Blue Wave (Lace cap) (4) Pink sterile flowers. Blue in acid soils	3L	£6.99
HYDRANGEA paniculata grandiflora Annabelle (5) Enormous panicles of cream flowers heads	3L	£6.99

	Pot size	Price
(e) HYPERICUM calycinum (Rose of Sharon) (1) Ideal for rough banks.	9cm	£2.25
(e) HYPERICUM Hidcote (3) Dense bushy habit Flat yellow flowers.	2L	£5.99
(e) HYPERICUM moserianum Tricolour (2) Variegated yellow and rose foliage.	2L	£5.99
KERRIA japonica Pleniflora – see Wall Shrubs and Climbers.		
(e) LAUREL Rotundifolia (10) – see under Hedging Plants.		
LAVATERA - variety of different varieties available	2L	£6.75
(e) LAVENDER angustifolia English lavender , flowers July-August	2L	£5.99
(e) LAVENDER angustifolia Hidcote (18”) Deep purple-blue. Very dwarf and compact. Grey foliage. July– August.	2L	£5.99
(e) LAVENDER angustifolia Munstead (2) Fine dwarf for edging.	2L	£5.99
(e) LAVENDER angustifolia Sawyers (18”) Lavender-blue flowers, white downy leaves.	2L	£5.99
(e) LAVENDER stoechas , French lavender, flowers June-July	2L	£5.99
LAVENDER – a good choice of other sizes and varieties available		
(e) LEPTOSPERMUM scoparium Nichollsii (7) Bright carmine-red flowers.	3L	£6.50
LEYCESTERIA formosa (Nutmeg Tree) (6) Red bracts, white flowers.	3L	£5.99
LILAC – SYRINGIA vulgaris Charles Joly (15) Double. Dark reddish-purple.	3L	£11.50
LILAC – SYRINGIA vulgaris Madame Lemoine (15) Double. White.	3L	£11.50
LILAC – SYRINGIA vulgaris Souvenir de Louis Spaeth (15) The popular single purple.	3L	£11.50
LILAC – SYRINGIA microphylla Miss Kim (5) Dwarf	3L	£9.50
(e) LONICERA nitida Baggese’s Gold (3) Golden evergreen leaves that can be trimmed to form neat mounds.	2L	£6.50
LONICERA fragrantissima (6) Creamy-white highly scented flowers in late winter.	3L	£6.75
For other <i>Lonicera</i> see climbing sectionm		
(e) MAGNOLIA grandiflora Exmouth (35”) Ivory-white flowers From Mar-Apr	3L	£13.50
MAGNOLIA stellata (4’) Semi-double white flowers.	3L	£13.50
MAGNOLIA soulangeana (15’) White flowers flushed pink at base.	3L	£13.50
(e) MAHONIA aquifolium (4’) Yellow flowers, crimson winter foliage.	3L	£5.99
(e) MAHONIA media Charity (6’) Deep yellow flowers.	3L	£8.75
(e) MYRTLE communis (8’) Aromatic, shiny-leaved shrub.	2L	£7.25
(e) NANDINA domestica ‘Firepower’ (4) ‘Sacred Bamboo’. Leaves tinged red in spring and autumn.	3L	£11.99
(e) OLERIA haastii (6) Grey-green box-like foliage. White flowers.	3L	£6.99
(e) OLERIA macrodonta (10) Grey leaves, shaped like holly, white flowers	3L	£5.99
PAEONIA (Tree) Various colours.	2L	£10.50
(e) PALM - TRACHYCARPUS fortunei (15) The hardy palm.	5L	£19.50
PAMPAS GRASS – CORTADERIA selloana Gold Band – golden striped leaves.	3L	£7.50
PAMPAS GRASS – CORTADERIA selloana Pumila . Shorter spikes.	3L	£7.50
PAMPAS GRASS – CORTADERIA selloana Sunningdale Silver (5)		
Tall loose silky white plumes.	3L	£7.50
PEROVSKIA Blue Spires (3.5) Violet blue flowers in late Sum – Aut. Silver leaves	2L	£6.75
PHILADELPHUS coronaries Belle Etoile . (6) White scented flowers in June	3L	£6.99
PHILADELPHUS coronarius Virginal (8) Double. Strong scented.	3L	£6.99
PHILADELPHUS coronarius Variegatus (4) Creamy-white scented flowers, Variegated foliage.	3L	£6.99
PHILADELPHUS lemoinei Manteau d’ Hermine (3) Small double white flowers. Scented.	3L	£6.99
(e) PHORMIUM We keep a stock of variously coloured forms of the New Zealand flax from cream, green and bronze-red.	3L	£11.99
(e) PHOTINIA fraseri Red Robin (6) Dark, glossy green leaves with brilliant scarlet young growth.	3L	£8.50

	Pot size	Price
(e) PIERIS Forest Flame (6) Brilliant red young growth in spring, with racemes of white flowers.	3L	£9.25
(e) PIERIS variegata (2) Compact shrub, variegated leaves. White flowers. Ericac.	3L	£9.25
(e) PITOSPORUM tenusifolium (10) Pale green glossy leaves on black stems. Ideal for decorations.	3L	£7.99
(e) PITOSPORUM tenusifolium Garnetti (9) Attractive silver leaves tinted pink.	3L	£7.99
(e) PITOSPORUM tenusifolium Tom Thumb (4) Compact growth, purple foliage with light green new growth.	3L	£7.99
POTENTILLA davurica Daydawn (3) Salmon-pink flowers	2L	£5.99
POTENTILLA davurica Gold digger (3) Large deep yellow flowers.	2L	£5.99
POTENTILLA davurica Red Ace (3) Bright red flowers.	2L	£5.99
POTENTILLA davurica Tangerine (1½) Deep yellow, orange flush.	2L	£5.99
(e) PRIVET , Green and Golden see Hedging section		
PRUNUS cerasus cistena (5) Glowing red foliage, dwarf bushy habit.	3L	£8.25
(e) PYRACANTHA – see Wall Shrubs and Climbers.		
(e) RHODODENDRONS , large flowered. Various colours & sizes. Ericaceous soil		POA
(e) RHODODENDRONS Dwarf and low growing varieties, various colours and sizes		POA
RIBES sanguineum (Flowering currant) King Edward V11 (6) Rose-crimson.	3L	£6.99
(e) ROSEMARY officinalis Miss Jessop (4) Upright habit.	2L	£5.75
ROSES – we stock a large range of roses, please see our separate list		
(e) SANTOLINA chamaecyparis (Cotton Lavender) (1½) Silver-grey foliage.	2L	£5.99
(e) SARCOCOCCIA confusa (1½) Winter Box. White fragrant flowers in winter.	3L	£7.99
(e) SENECIO greyii – see Brachyglotis		
(e) SKIMMIA japonica Veitchii (Formanii) (4) Profusion of scarlet berries.	3L	£8.25
(e) SKIMMIA japonica Rubella (4) Male form.	3L	£8.25
SPIRAEA arguta (4) (Bridal Wreath) Pure white flowers April-May.	3L	£6.75
SPIRAEA japonica Anthony Waterer (4) Flat crimson flowers. Summer.	3L	£6.75
SPIRAEA japonica Goldflame (4) Bright orange foliage in spring, changing to green. Red flowers. Summer.	3L	£6.75
SYMPHORCARPUS alba (Snowberry). Marble sized white berries. Deciduous.	3L	£5.99
TAMARIX ramosissima Rubra (10) Good seaside shrub. Grey-green foliage. Pink flowers.	3L	£5.99
VIBURNUM bodnatense Dawn. (7) Light, rose-pink fragrant flowers in winter.	3L	£7.99
VIBURNUM burkwoodii (8) Fragrant white flowers.	3L	£8.50
VIBURNUM farreri (fragrans) (8) Pink flowers. Oct- Feb.	3L	£7.99
VIBURNUM davidii (2) Turquoise-blue berries on female plants. Plant in groups for pollination.	3L	£8.25
VIBURNUM opulus Sterile. The Snowball Tree (10). White flowers May & June	3L	£7.99
VIBURNUM plicatum Mariesii (40) Horizontal branches. White lace cap flowers. Red foliage in autumn.	3L	£7.99
(e) VIBURNUM tinus (Laurustinus) (8) White flowers in winter.	3L	£6.99
(e) VIBURNUM tinus Variegata (Laurustinus) (7). White flowers in winter	3L	£6.99
(e) VINCA (Periwinkle) a variety of cultivars available.	1L	£3.99
WEIGELIA Abel Carriere (6) Large, deep pink.	3L	£6.99
WEIGELIA Bristol Ruby (6) Ruby-red.	3L	£6.99
WEIGELIA florida 'Foliis Purpureis' (3) compact shrub with dark pink flowers in May – June deep bronze foliage	3L	£6.99
WEIGELIA Florida variegata (6) Variegated foliage pink flowers.	3L	£6.99

ORNAMENTAL TREES

Because we try to maintain a wide selection of high quality trees and our stock is constantly being updated, they vary considerably in age, height and pot size. This means that prices too vary, depending on the individual tree. Each tree therefore is allocated one of a selection of our price brackets: £24.99, £29.99, £34.99, £39.99, £44.99, £49.99. Some larger trees are also often available. Please enquire at the garden center for prices of any trees you are specifically interested in. Each tree is given a code of S = small, M = Medium, L = Large, which indicates their approximate heights after 10 yrs:

S= up to 4m M = up to 6m L = over 6m CL = Tolerant of Clay CH = Tolerant of Chalk
SmG = means that the tree is well suited to small gardens, either due to it's height or column like habit. Dwarf fruit trees are also good in this situation.

ACER campestre (Field Maple). Attractive lobed leaves, which turn golden in autumn. Suits all soil types	M	Cl&Ch
ACER capillipes . (Snake bark maple). Bark is striated, The lobed leave are red when young, then green, then red	S	Cl
ACER conspicuum Silver Cardinal This snakebark has leaves that are streaked white & pink when young	S	
ACER davidii . White streaked bark with age. Scented green flowers in early summer followed by ornamental keys	M	
ACER freemanii Autumn Blaze . As name suggest spectacular bright orange and red leaves in autumn	M	Cl
ACER griseum (Paper bark maple) . Bark flakes with age. Leaves turn scarlet in autumn. Classic lawn specimen	S	Cl&Ch
ACER platanoides Crimson King . Fast growing tree with copper-crimson leaves that turn crimson in autumn	M	Cl&Ch
ACER platanoides Drummondii . Attractive green leaves that are edged with cream. Fast growing	M	Cl&Ch
ACER pseudoplatanus Brilliantissimum . New leaves are shrimp-pink then turn yellow-green. Slow growing	S	SmG
ACER pseudoplatanus Simon Louis Freres . Leaves are brilliant pink, turning to green/pink/purple. Slow growing	M	Cl&Ch
ACER pseudoplatanus Spaethii Good autumn colour, grows on most soils & tolerates salt winds.	L	Cl&Ch
ACER rubrum Somerset . Leaves turn deep red in autumn. Fast growing, tolerant of clay and chalk	M	Cl&Ch
ACER rubrum Summer Red . Unusual coloration as older leaves are green and young ones red on the same stem	M	Cl&Ch
AESCULUS hippocastanum (Horse Chestnut) Large candle like flowers in late spring. Conkers in autumn.	L	Cl&Ch
ALIANTHUS altissima (Tree of Heaven) Pale yellow flowers, winged seed pods & lge leaves turn red in autumn	M	
AMELANCHIER arborea 'Robin Hill' Flowers emerge pink and then white in spring. Prefers neutral – acid soil	S	SmG
AMELANCHIERI amarckii Abundance of white flowers April. Beautiful autumn foliage. Neutral – acid soil	S	SmG
BETULA ermanii 'Grayswood Hill' Open habit, peeling pink & cream bark. Leaves turn yellow in autumn	M	
BETULA nigra (River Birch) . Attractive peeling, shaggy bark. Ideal for damp conditions.	M	Cl&Ch
BETULA pendula (native Silver birch) . Graceful tree with white, peeling bark. Green leaves turn yellow in autumn	M	

BETULA pendula purpurea	Slender weeping habit, purple leaves and silvery-white bark, slow growing	M	
BETULA pendula Youngii	An attractive weeping tree. Fast growing. Ideal for a large lawn	M	Cl&Ch
BETULA utilis Jacquemonti	(Himalayan Birch) The silvery-white peeling bark makes it attractive all year round	M	Cl
BETULA utilis 'Snow Queen'	The silvery-white peeling bark makes it attractive all year round	M	
CARPINUS betulus 'Fastigiata'	An upright/pyramidal tree. Leaves turn yellow in autumn	M	Ch&Cl
CATALPA bignoides aurea	(Indian Bean tree) Panicles of white flowers in July-August. Low, spreading habit	S	
CORNUS kousa	An elegant tree with spectacular white bracts from June into early July. Slow growing	S	
COTONEASTER cornubia	Bright red fruits in autumn. Arching habit. Tolerates most soils as well as coastal sites	S	Ch&Cl
(e) COTONEASTER hybridus pendulus.	Beautiful weeping tree with white flowers in May & red berries in autumn	S	SmG
COTONEASTER Rothschildianus	Attractive tree with clusters of creamy yellow berries in autumn	S	SmG
CRATAEGUS grigonensis.	Large red berries, leaves well into winter. Tolerates most soils & coastal sites	M	
CRATAEGUS laevigata Crimson Cloud.	Mass of Scarlet flowers with white eyes in May. Red fruit in autumn	S	Ch&Cl
CRATAEGUS laevigata Paul's Scarlet.	Double pink-red flowers in late spring. Small red fruit in autumn	S	Ch&Cl
CRATAEGUS laevigata Rosea Flora Pleno	Profusion of double pink flowers in May	S	Ch&Cl
CRATAEGUS persimilis prunifolia	White flowers in spring, leaves & berries give dramatic autumn colour	M	Ch&Cl
(Se) CYTISSUS battandieri	Erect habit. Silver downy foliage & pineapple scented flowers of yellow flowers in July.	S	SmG
DAVIDIA involuta	(Pocket Handkerchief Tree) Large white flower bracts in May. Purple berries in autumn	M	
EUCALYPTUS gunnii.	Beautiful grey/blue foliage, peeling bark, foliage good for flower arranging	M	Cl
FAGUS sylvatica	(Green beech) (Also see hedging). Dark green leaves turn copper in autumn	L	Ch
FAGUS sylvatica Purpurea	(copper beech). Variable shades of purple. Tolerates exposed positions	L	Ch
FAGUS sylvatica purpurea pendula	(Purple weeping beech). Excellent, small weeping tree with purple leaves	S	SmG
FAGUS sylvatica Tricolour.	Purple leaves with pink margins. Tolerates exposed positions	M	Ch
FRAXINUS excelsior	(Common Ash). Fast growing tree with winged keys in autumn, black winter buds	L	Ch&Cl
GINKO biloba	(Maidenhair Tree) Leaves turn bright yellow in autumn. Good coastal tree. Shelter from cold winds	M	
GLEDITSIA triacanthos Sunburst.	Thornless, bright yellow-green fern like leaves. Superior to Robinia frisia	M	
LABURNUM watereriVossii.	Erect tree with long chains of yellow flowers in early June.	S	Ch&Cl
LIQUIDAMBER styraciflua.	Brilliant orange and crimson autumn colouring.	M	

LIQUIDAMBER styraciflua 'Lane Roberts' Maple type leaf that turns dark crimson in autumn.	M	
LIRIODENDRON tulipifera (Tulip Tree) Magnificent tree. Conical shape when young & domed when older. Leaves turn butter yellow in autumn	L	
MAGNOLIAS - see shrub A-Z		
MALUS brevipes Wedding Boquet. Ivory white flowers in April, small dark red fruits from autumn – early winter	S	
MALUS Butterball golden yellow fruits similar to Golden Hornet. Long lasting.	S	
MALUS Evereste. Conical tree with white-pink flowers in April & small red & yellow fruit in autumn & winter	M	
MALUS Gorgeous, Compact tree with scented apple blossom in April & bright red/pink fruits in autumn.	M	
MALUS John Downie. Upright. White flowers in spring, orange-scarlet fruit in autumn. Great for making jelly.	S	
MALUS Laura. Small tree with upright habit. Pink & white flowers with maroon fruit later, great for jelly making.	S	
MALUS moerlandsii Profusion. Late variety, wine-red flowers.		
MALUS pupurea Neville Copeman Red leaves followed by large purple fruit which remain into winter	M	
MALUS Red Jade Pretty weeping tree. White flowers with pink blush, scarlet fruit in autumn	S	SmG
MALUS Red Glow. Young red leaves, pink flowers in spring, Purple-red fruit in autumn. Good for jelly making	M	
MALUS Rudolph Upright tree with excellent autumn leaf colouration, rose-red flowers in spring. Purple fruit	S	
MALUS Royal Beauty. Small, weeping tree with copper –red leaves when young. Deep pink flowers”	S	SmG
MALUS Royalty. Stunning dark red leaves, flowers and berries.	M	
MALUS zumi Golden Hornet. Compact tree with white flowers in spring & masses of yellow fruit in autumn.	S	
MALUS 'Sun Rival' Charming semi weeping (umbrella shaped) tree with pink-white, scented flowers, Red fruit.	S	SmG
MALUS toringoides. Small wide spreading tree with cream, scented flowers. Red & yellow fruits.	S	
MALUS Tschonoskii. Columnar tree with stunning orange/yellow/red autumn leaf colours. White flowers, yellow fruit.	M	SmG
POPULUS alba (White Poplar) White underside of leaves. Will stand salt and chalky soil.	L	
POPULUS candicans Aurora Leaves are green with attractive white blotches when young. Needs plenty of space.	L	
POPULUS nigra Italica (Lombardy Poplar). Tall, narrow tree. Fast growing windbreak, good for screening	L	
POPULUS tremula (Quaking Aspen) Grey catkins in early spring. Long leaf stalks make leaves flutter.	L	
PRUNUS Amanogawa. Semi double, blush-pink flowers in Spring. Columnar habit. Leaves turn orange in autumn	M	SmG
PRUNUS avium Pleana Excellent show of double white flowers in May. Leaves have good autumn colour	M	
PRUNUS nipponica 'Brilliant'. Small bushy tree with white/pink flowers in spring. Leaves have autumn colour	S	
PRUNUS cerasifera Spring Glow (Ornamental flowering plum) Vivid pink flowers on bare branches followed by bronze foliage.	S	

Prunus cerastifera 'Trailblazer' (ornamental plum) bronze leaves, soft white flowers, purple fruits which are edible.	M	
PRUNUS dulcis (Common Almond). White-pink flowers in early spring on bare wood. Plant two for gd pollination.	M	
PRUNUS Kanzan Double, deep pink flowers in late spring. Foliage is bronze when young	L	
PRUNUS Kiku-shidare-zakura (Cheals Weeping). Small arching tree with double, rose pink flowers in spring	S	
PRUNUS Okame . Masses of deep shell pink flowers Feb-Mar. Good autumn colour	S	
PRUNUS pendula rosea . Attractive weeping tree with pink flowers from March	S	
PRUNUS Pink Perfection Extra large double, rose pink flowers which persist for weeks. Good autumn colour	S	
PRUNUS pissardii cerasifera nigra . Deep black-purple leaves & twigs, pink flowers.		
PRUNUS Royal Burgundy . Double deep pink flowers and deep crimson leaves.	M	
PRUNUS sargentii . Large, Single pink flowers in early March-April. Brilliant red leaves in autumn	M	
PRUNUS serrula Acolade Semi double, light pink flowers in April. Polished mahogany bark.	S	
PRUNUS serrula The Bride . Compact tree with a mass of single white flowers with red anthers. Mahogany bark.	S	SmG
PRUNUS serrula tibetica (Tibetan Cherry) Bark peels to polished mahogany. Small white flowers	M	
PRUNUS Shogetsu (Oku-Miyako) Small graceful tree. Pink buds, opening to large white flowers	S	
PRUNUS Shirotae (Mount Fuji) Horizontal branches. Large, white semi double fragrant flowers in April.	M	
PRUNUS subhirtella Autumnalis white flowers from autumn and through most of winter	S	
PRUNUS subhirtella Autumnalis Rosea Pink flowers from autumn and through most of winter	S	
PRUNUS Tai Haku (Great White Cherry) A stunning mass of very large single white flowers in April – May.	M	
PRUNUS triloba (flowering almond). Double pink flowers in April/May, leaves have bronze autumn colour	S	SmG
PRUNUS Ukon . Unusual semi double pale yellow flowers. Leaves bronze when young.	M	M
PRUNUS yedoensis . Graceful spreading tree with single flowers that are white blushed with pink.	M	
PYRUS Salicifolia pendula (Flowering Pear) Small weeping tree with silver leaves and cream flowers in April	S	SmG
PYRUS Chanticleer (Flowering Pear). White flowers in Spring & leaves have good Autumn colour. Upright habit	M	
(e) QUERCUS ilex (Holm oak) Dark green leaves with pale underside. Will tolerate chalk soil & a coastal position	L	Cl&Ch
QUERCUS robur (English Oak) Lobed green leaves, acorns in summer. Tolerates most soils, including clay	L	Cl
QUERCUS rubra (Red Oak). Lovely red autumn colours. Prefers well drained soil, will tolerate chalk	L	Ch
SALIX alba (White willow). Green – silver leaves. Will tolerate coastal conditions and damp soils. Fast growing	L	Cl
SALIX Britzensis (Scarlet Willow) Bright orange stems give great Winter colour. Tolerates clay, chalk, damp soils	M	Cl&Ch
SALIX caprea . (Goat Willow). Oval leaves. Catkins in early spring. Can tolerate dry or chalky soils	L	Cl&Ch
SALIX caprea Pendula (Kilmarnock Willow) A dwarf, weeping willow with		

grey-green leaves & silver catkins	S	SmG
SALIX gracilistyla Melanostachys. Dark red stems in the winter & unusual black catkins in the spring.	S	SmG
SALIX integra 'Hakuro Nishiki'. (Flamingo tree) New leaves are blotched with pink & white. Sold as half std	S	SmG
SALIX purpurea pendula Charming, small slender branched weeping tree with purple shoots & catkins in spring	S	SmG
SALIX sepulcralis Chrysocoma. (Golden weeping willows) looks upright when young, weeps later.		
Golden-yellow bark. Fast growing	L	
SALIX babylonica Tortuosa (Corkscrew Willow). Attractive twisted, curly branches & wavy leaves. Fast growing	L	
SALIX viminalis (Common Osier) Ideal for willow sculptures, basket making etc. Prefers moist soil	M	
SORBUS aria Lutescens (White Beam) Creamy-white reverse leaves in Spring, orange berries in autumn	M	
SORBUS aucuparia (Common Rowan or Mountain Ash). Bright red fruits in early autumn	M	
SORBUS aucuparia splendifolia. An elegant tree with fern like leaves, upright habit, red berries in autumn	M	
SORBUS aucuparia Apricot Queen. White flowers in spring, apricot coloured berries & red leaves in autumn	M	
SORBUS cashmiriana. White flowers tinged with pink in spring, large white berries in autumn.	S	
SORBUS Chinese Lace. Attractive deeply cut leaves that turn red in autumn, also red berries in autumn	S	
SORBUS commixta Embly Fluffy white flowers in May/June. Orange-red fruit & spectacular foliage in autumn	M	
SORBUS Joseph Rock. Butter-yellow fruit & crimson foliage in autumn. Upright, compact shape	S	
SORBUS hupehensis White flowers in June and bright red foliage with white berries in autumn foliage	M	
SORBUS hupehensis Pink Pagoda. Blue-green leaves, white flowers in spring. Pink fruits that last well in winter	M	
TILIA cordata (Small leaved lime) Heart shaped leaves. Cream scented flowers in summer.	L	
TILIA platyphyllos (Large leaved lime) Small honey scented flowers in early summer. Good tree for wildlife.	L	

CONIFERS

We stock a wide range of tall, prostrate and dwarf growing conifers, which are available for inspection in our Garden Centre. For details of our hedging conifers (Leylandii etc) see our hedging section.

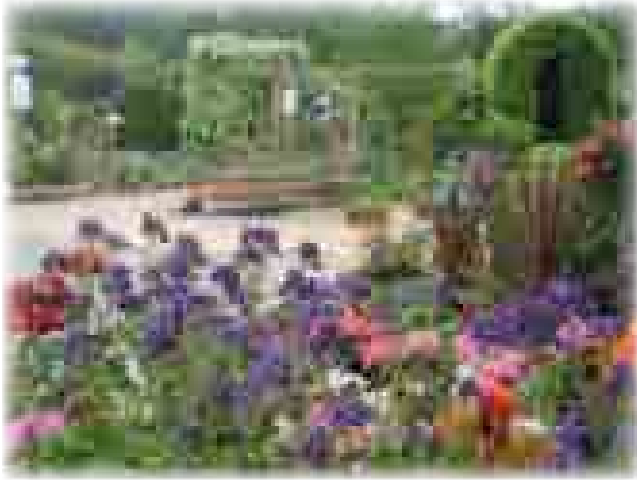
GRASSES

We now have a designated section for grasses and bamboos on our brick paved area. Please ask for specific varieties and prices.

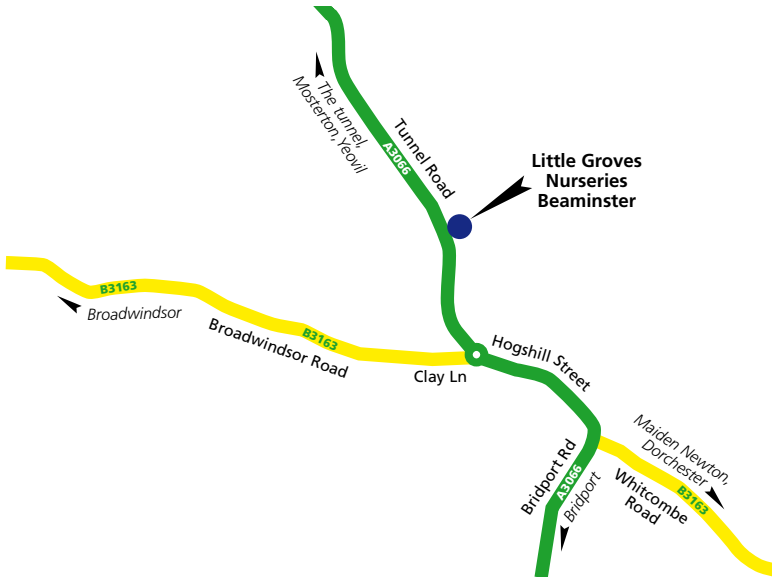
LITTLE GROVES NURSERY

Little Groves Nursery is our smaller, sister nursery that is based in the small town of Beaminster (7 miles north of Bridport). Little Groves is a general plant nursery, with a small garden shop (stocking composts and many gardening essentials), it also specialises in growing herbs, aromatic & culinary plants. Some of our favourite plants to grow amongst the usual garden favourites are Salvias, Nepetas, Monarda, & Philadelphus, as well as some more unusual treasures.

The nursery is set amongst a garden landscaped by Marshall James Garden Development, who are Chelsea Gold Medal Winners. Unlike many nurseries the sales beds are laid out in themes to help you garden, such as plants for Spring, Summer, Autumn & Winter colour, Plants for shade, Cottage garden plants, Prairie planting etc. Many of the plants are grown on site & the small, but enthusiastic team of staff are always keen to help gardeners, no matter what their level of experience.



A view of the sales area at Little Groves Nursery, Tunnel Road, Beaminster.



CLIMBERS AND WALL SHRUBS

(e) indicates evergreen. (ws) indicates wall shrub. (c) indicates climber.

	Pot Size	Price
ws ACACIA dealbata (10) (Mimosa) Fern leaf, yellow flowers in spring.	3L	£8.50
AKEBIA quinata . Semi-evergreen, fragrant red-purple flowers.	2.5	£11.50
CAMPISIS (Tecoma) x tagliabuana 'Mdm.Galen' . Large clusters orange-red trumpet flowers (August-September).	3	£13.75
(ws) CHAENOMELES superba Crimson and Gold . (5) Red flowers. Lime-coloured fruit.	3	£7.25
(ws) CHAENOMELES Elly Mossel (4) Masses of large, crimson flowers, yellow fruits	3	£7.25
(ws) CHAENOMELES superba Madam Butterfly Pink and white flowers. Yellow fruits	3	£7.25
(ws) CHAENOMELES speciosa Nivalis . (7) Snow-white form of strong growth.	3	£7.25
(ws) CHAENOMELES superba Pink Lady . (4) Clear rose-pink.	3	£7.25
CLEMATIS – Large Flowered Hybrids		
(c) Barbara Jackman . Blue with petunia bar, June & Sept	2.5	£8.75
(c) Comtesse de Boucharde . Abundant rose-pink flowers, July & Aug.	2.5	£8.75
(c) Dr. Ruppel . Large pink flowers with carmine bar, May & July	2.5	£8.75
(c) Duchesse of Edinburgh . Large double white flowers, June & Aug.	2.5	£8.75
(c) Ernest Markham . Rich red flowers, June & Sept.	2.5	£8.75
(c) Gillian Blades White with pale mauve margins, May & Aug.	2.5	£8.75
(c) Gipsy Queen . Velvety deep purple, July & Sept. Very vigorous.	2.5	£8.75
(c) Hagley Hybrid . Abundant satin pink flowers, June & Sept.	2.5	£8.75
(c) Jackmanii Superba . Rich purple, free flowering, June & August, vigorous.	2.5	£8.75
(c) Lasustern . Large deep lavender-blue flowers, June & August.	2.5	£8.75
(c) Lincoln Star . Star-shaped raspberry-pink flowers with bar, May & June	2.5	£8.75
(c) Marie Boisselot . Large white flowers. Long flowering, June & August	2.5	£8.75
(c) Mrs Cholmondely . Profuse pale blue flowers all summer.	2.5	£8.75
(c) Multi Blue . Double flowers. Flowering twice – June & Sept.	2.5	£8.75
(c) Nelly Moser . Rosy-mauve with carmine bar, May & Sept.	2.5	£8.75
(c) Niobe . Deep ruby-red, free flowering June & August.	2.5	£8.75
(c) Perle D'Azure . Azure-blue, June & August, vigorous & showy.	2.5	£8.75
(c) Rouge Cardinal . Deep crimson flowers, June & August	2.5	£10.50
(c) Royal Velvet . Compact deep purple flowers, June & Sept.	2.5	£8.75
(c) Star of India . Purple with a carmine bar, July & August.	2.5	£8.75
(c) The President . Rich purple, Seldom out of bloom.	2.5	£8.75
(c) Ville de Lyon . Multitude of bright carmine-red flowers, June & Sept.	2.5	£8.75
(c) Vyvan Pennell . Deep lavender-blue double flowers, May & August.	2.5	£10.50
(c) Wadas Primrose Creamy-white with soft green bar, May & June	2.5	£8.75
CLEMATIS - Small flowered Varieties		
(c) alpina Pamela Jackman . Small mid Blue flowers in April	2.5	£8.75
(c) alpina Ruby . Small red flowers in April	2.5	£7.75
(c, e) armandii . Large evergreen leaf. Cream bell flowers in March-April	2.5	£20.50
(c, e) armandii Apple Blossom . Evergreen, pink bell flowers in March-April (needs sheltered site).	2.5	£20.50
(c, e) armandii Snowdrift . Evergreen. Larger flowers than armandii, in March-April	2.5	£20.50
(c, e) cirrhusa Freckles . Evergreen. Creamy-pink bell flowers, dark-red freckles inside, Jan-Mar. One of the best Winter flowering clematis.	2.5	£10.50
(c, e) cirrhusa Wisley Cream . Evergreen. Creamy-pink bell flowers in Jan – Mar.	2.5	£10.50
(c) macropetela Double blue flowers with long twisted sepals, April-May	2.5	£8.75
(c) macropetela Markham's Pink . Soft pink form, April-May	2.5	£8.75
(c) montana Broughton Star . Double pink flowers in May – June	2.5	£8.75
(c) montana Elizabeth . Pale pink, sweetly scented flower in May-June	2.5	£8.75

	Pot Size	Price
(c) montana Grandiflora . Large white flowers in May - June	2.5	£8.75
(c) montana Marjorie . Pink flower in May-June	2.5	£8.75
(c) montana Mayleen . Satin Pink, scented flowers in May-June	2.5	£8.75
(c) montana Pink Perfection . Pink, fragrant flower in May-June, very vigorous.	2.5	£8.75
(c) montana Rubens . Pale mauve-pink, scented flowers in May-June	2.5	£8.75
(c) montana Warwickshire Rose . Red & white flowers in May-June	2.5	£8.75
(c) montana Wilsonii . White, highly scented flower in late May-July	2.5	£8.75
(c) orientalis Bill Mackenzie . Large, yellow bell-shaped flowers July-Sept	2.5	£8.75
(c) tangutica . Yellow lantern flowers Aug - Sept, attractive seed heads to follow.	2.5	£8.75
(c) Texensis Princess Diana . Deep vibrant pink, July-Sept.	2.5	£12.99
(c) Viticella EtoileViolette . Deep purple with yellow anthers, July-Sept	2.5	£8.75
(c) FALLOPIA baldschuanicum (Polygonium) (Russian Vine) . Rampant climber.	2.5	£8.75
(ws, e) FREMONTODENDRON californicum. Californian Glory .	3	£14.25
Large yellow flowers throughout summer. Semi evergreen.		
(ws, e) GARRYA elliptica . (8) Silver-grey catkins in winter.	3	£10.25
LONICERA (HONEYSUCKLE)		
(c) LONICERA heckrotii Gold Flame . Large flowers, yellow & orange, June-Aug	3	£8.75
(e, c) LONICERA henryi . Evergreen, with yellow flowers stained red during June & July.	3	£8.75
(e, c) LONICERA Halliana . Sweetly scented yellow and white, April-Aug.	3	£8.75
(c) LONICERA Periclymenum Belgica . Early Dutch. Red, apricot, cream flowers May-June. Scented.	3	£8.75
(c) LONICERA Periclymenum G.S.Thomas . Flowers cream with gold June-Aug. Scented.	3	£8.75
(c) LONICERA Periclymenum Serotina (late Dutch) Fragrant, red & yellow flowers July-Oct	3	£8.75
(e,c) LONICERA repens (flexuosa) .Fragrant yellow and red flowers, June - October	3	£8.75
HUMULUS Lupulus Aureus . (Golden Hop) Lime green/golden foliage. Full sun.	2.5	£10.50
(c) HYDRANGEA petiolaris . White flowers May - August. Grows in Sun or shade.	3	£11.50
(c, e) HYDRANGEA seemannii . Cream flowers from June - Sept. Sun-part shade	3	£11.50
IVY - HEDERA		
(e, c) HEDERA canariensis Gloire de Marengo . Large leaves with silvery-white variegation.	2.5	£6.99
(e, c) HEDERA colchica Paddy's Pride . Large leaves attractively blotched deep yellow.	2.5	£6.99
(e, c) HEDERA helix Goldchild . Small variegated leaf.	2.5	£6.99
(e, c) HEDERA helix Goldheart . Small green leaves, bright gold centres.	2.5	£6.99
(e, c) HEDERA helix Little Diamond . Small, cream & green variegated. Slow growing.	2.5	£6.99
(e, c) JASMINUM humile Revolutum . Yellow flowers in summer.	2.5	£10.50
(c) JASMINUM nudiflorum . Yellow, favourite winter flowering.	2.5	£8.75
(c) JASMINUM officinale . Sweetly scented, white, summer flowering.	2.5	£8.75
(c) JASMINUM officinale Clotted Cream . Sweetly scented cream flowers in summer	2.5	£9.50
(c) JASMINUM officinale Fiona Sunrise . Golden foliage, white, scented flowers in summer.	2.5	£8.75
(c) JASMINUM officinale Inverleith . White scented flowers with pink buds in summer.	2.5	£8.75
(ws) KERRIA japonica Pleniflora . (6) Deep double, yellow flowers, April-May.	3	£6.99
(c) PARTHENOCISSUS (Ampelopsis) henryana . (15)Self-clinging, dark velvety turning to bright red in autumn.	2	£8.75
(c) PARTHENOCISSUS quinquefolia . Large leaved Virginia Creeper. Very vigorous. Good autumn colour.	2	£8.75
(c) PARTHENOCISSUS tricuspidata Veichii . Small leaved Virginia Creeper. Very vigorous. Good autumn colour (Boston Ivy).	2	£8.75
(c) PASSIFLORA caerulea (Passion flower) Blue & white flowers in mid-late summer	2.5	£8.75
(c) PASSIFLORA caerulea Lavender Lady . Lavender-violet flowers in late summer autumn	2.5	£8.75
(c) POLYGONUM - see Fallopia		

	Pot Size	Price
(ws, e) PYRACANTHA Cadanche (Saphyr Orange). (10) Orange berries. Disease resistant.	3	£6.99
(ws, e) PYRACANTHA Cadrou. (SaphyrRed) (10) Red berries. Disease resistant.	3	£6.99
(ws, e) PYRACANTHA Jaune. (Saphyr Yellow)(10) Yellow berries. Disease resistant.	3	£6.99
(ws, e) PYRACANTHA Orange Glow. (14) Free flowering, bright orange.	3	£6.99
(ws, e) PYRACANTHA Red Column (10) Large bright red berries on a vigorous upright bush.	3	£6.99
SOLANUM crispum glasnevin. (10) Likes sunny walls. Mauve flowers in summer.	3	£8.75
SOLANUM jasminoides Album. As above, but white flowers.	3	£8.75
(c) WISTERIA floribunda Longissima Alba. Very long drooping white, scented racemes.	3	£21.75
(c) WISTERIA floribunda Macrobotrys. Extra long mauve, scented flowers.	3	£21.75
(c) WISTERIA floribunda Peaches and Cream. Pink in bud, blush pink in flower.	3	£21.75
(c) WISTERIA floribunda Rosea. Very long, scented, drooping racemes of lilac-rose.	3	£21.75
(c) WISTERIA sinensis Prolific. Splendid mauve climber for sunny walls, scented	3	£21.75
(c) WISTERIA sinensis Black Dragon. Double, dark purple flowers.	3	£21.75

POTTED HEDGING & SCREENING PLANTS

WE HAVE A GOOD RANGE OF BARE ROOTED HEDGING THROUGH THE WINTER MONTHS (NOVEMBER – MARCH), PLEASE ASK FOR A SEPARATE BARE ROOT HEDGING LIST

The list below is a list of potted hedging that is available all year round

* denotes that the subject is particularly good for seaside hedges and screens.

(e) evergreen. S=Space between plants when planting out

Further descriptions for most of the above hedging can be found under our general list of trees and shrubs. Other native hedging trees are available in smaller numbers.

	Approx size of plants	Price per plant	Price per multi-buy
BEECH, GREEN - <i>Fagus sylvatica</i> (S=45cm)	80+cm	£4.99	£45 per 10
BEECH, COPPER - <i>Fagus sylvatica purpurea</i> (S=45cm)	80+cm	£6.99	£65 per 10
BLACKTHORN- <i>Prunus spinosa</i> (S=45cm)	60+cm	£3.99	£37 per 10
BUCKTHORN, COMMON- <i>Rhamnus cathartica</i> (S=30cm)	60+cm	£6.25	£57.50 per 10
BUCKTHORN, SEA- <i>Hippophae rhamnoides</i> (S=60cm)	60+cm	£6.25	£57.50 per 10
(e) BOX - <i>Buxus sempervirens</i> (S=20cm)	10-20cm	-	£9.50 per 6 pack
(e) CUPRESSOCYPARIS <i>leylandii</i> (S=1m.) Green. Fast growing.	60-80cm	£6.99	£62 per 10
(e) CUPRESSOCYPARIS <i>leylandii</i> (S=1m.) Green. Fast growing.	180cm+	£32	£300 per 10
(e) CUPRESSOCYPARIS <i>leylandii</i> Castlewella (S=1m.) Gold.	60 – 80cm	£6.99	£62 per 10
(e) CUPRESSOCYPARIS <i>leylandii</i> Castlewella (S=1m.) Gold.	180cm+	£32	£300 per 10
DOGWOOD - <i>Cornus sanguinea</i> (S = 70cm)	50cm+	£4.50	£40 per 10
(e)* ESCALLONIA <i>macrantha</i> (S = 60cm.)	40+cm	£6.99	£62 per 10
FIELD MAPLE - <i>Acer campestre</i> (S= 45cm)	60+cm	£4.99	£45 per 10
(e)* GRISLINIA <i>littoralis</i> (S = 80cm.)	40+cm	£7.99	£72 per 10
HAWTHORN/QUICKHORN - <i>Crataegus monogyna</i> (S=45cm)	60+cm	£3.99	£37 per 10
HAZEL - <i>Corylus Avallana</i> (S=80)	60+cm	£4.99	£4.50 per 10
(e) HOLLY - <i>Ilex aquifolium</i> (S = 30cm)	30+cm	£6.99	£62 per 10
HORNBEAM- <i>Carpinus betulus</i> (S = 90cm)	60+cmcm.	£5.75	£52.50 per 10
(e) LAUREL <i>Rotundifolia</i> (S=90cm)	40+cm	£6.75	£60 per 10
(e)* LAVENDER <i>angustifolia</i> (English lavender)(S=30cm)	10cm	-	£7.50 per 6 pack
(e)* LAVENDER <i>angustifolia</i> Hidcote (Dwarf lavender) (S = 30cm)	10cm	-	£9.50 per 6 pack
(e) PRIVET Green Oval – <i>Ligustrum ovalifolium</i> (S=40cm)	40+cm	£6.50	£58.50 per 10
VIBURNUM <i>opulus</i> – <i>Guedder Rose</i> (S = 80cm)	40+cm	£5.99	£55.00 per 10
(e) YEW <i>Taxus baccata</i> (S 3ft.)	40-60cm	£9.50	£88 per 10

FRUIT

APPLES

Prices:

Bush 2/3 years: £28.00

Rootstocks: MM106 (Height: 8-10ft), M26 (Height:7-10ft), M27 (Height: 3ft)

Espaliers: £39.99 - £49.99 depending on size/age/number of tiers (Most are trained on our own nursery)

Half Standards £34 or £39 each (depending on size)

Bramley Seedling. The best quality cooker ripening in October to November. Fruits very large and flat in shape coloured green with a slight pink flush. A good acid flavour that freezes and stores well. A vigorous tree that needs plenty of space. So a M27 rootstock would be the most suitable for the smaller garden. Should be pruned lightly to encourage fruit bud development. Fairly resistant to scab.

Charles Ross. A fine dessert apple which may be cooked, ripening in October and will keep until November. Fruits are medium to large size slightly flat, with colour similar to Cox's. Flesh tender, sweet, and juicy with aromatic flavour. Tree growth is compact and has heavy regular crops and good resistance to scab. Grows well in any region.

Cox's Orange Pippin. The most popular eating apple ripening in October, but will store until Christmas. Fruits are medium size, crisp and juicy with characteristic aromatic flavour. Growth moderate, making a medium sized tree.

Cox's Orange Self Fertile. Self-fertile version of the above variety

Discovery. The most popular early dessert apple ripening early August. Fruits medium sized, flat in shape and coloured yellow with bright red cheek flush. Flavour sweet and juicy with crisp flesh. Tree moderately vigorous with upright spreading habit. Crops well after establishment and the flowers have some frost resistance. Grows well in any region and has good disease resistance. Prune lightly to induce fruiting.

Egremont Russet. A dessert apple ripening in October but will remain on the tree until December. Fruit medium sized, round flat shaped with a completely russeted skin. Flesh firm, rather dry, sweet with a nutty aromatic flavour. Crops well and regularly. Tree moderately vigorous with upright but compact growth. Relatively disease free and grows well in any region.

Ellison's Orange. A Cox type dessert apple ripening in September to October. Fruits medium sized and golden yellow with a crimson flush. Flesh juicy and sweet with aromatic aniseed flavour. Tree growth moderate with slender compact habit. Crops fairly heavy and early on in its life. Flowers show some resistance to frost damage.

Fiesta. (Also known as Red Pippin) An attractive cox style apple which is firm, crunchy and sweet. Primarily an eating apple but can be used for cooking also. Easy to grow. Harvest in late September. Partly self fertile – to avoid a small crop best grown with another tree to pollinate it mid - late in the season.

Fortune (Laxton's). Early dessert apple ripens September. Fruit round medium size, pale yellowish green flushed and striped bright red. Flesh firm and sweet. Compact tree suitable for a small garden. Crops well from early age.

George Cave. A very good early dessert variety, ripening late July to August. Fruit medium sized, greenish-yellow and flushed red. Flesh sweet aromatic and firm if eaten fresh. Heavy regular cropper on a tree of moderate fairly compact growth.

Golden Delicious. Late to very late dessert apple. Keeps until April in cold store. Fruit pale yellow, grey russet dots. Crisp, juicy and sweet. Good resistance to frost damage. Tree medium to vigorous growth and spreading.

Grenadier. Cooking apple. Mid August to late October. Round flattish fruity, large, pale green tinged yellow. Tree moderate growth and compact. Regular heavy cropper. Suitable for a small garden. Scab resistant.

James Grieve. A popular dessert apple which is best eaten fresh from the tree. Fruits medium sized and conical, coloured pale yellow with crimson flush and stripes. Soft very juicy flesh with a delicious tangy flavour. Crops heavily and regularly on a tree of vigorous upright fairly compact growth. Grows well in any region and blossoms show frost resistance.

Jupiter. New Cox type eating apple, ripens October to November and keeps well. Fruits slightly conical and medium sized. Golden-yellow flushed rich red. Flesh crisp, juicy, and sweet with familiar Cox flavour. Crops regularly and heavily up to twice that of Cox. Tree growth vigorous and bushy.

Katy. A successful James Grieve and Worcester cross which has produced this early dessert apple, which ripens in September and will keep for a month. Conical medium sized fruits, coloured bright yellow and streaked red. Firm flesh that is crisp and juicy. Good heavy and regular cropper from early on its life. Tree growth vigorous and upright.

Laxton Superb. A popular eater that ripens in October to November and keeps well. Fruits medium sized and slightly conical, coloured greenish yellow and flushed with crimson. Flesh firm and sweet with similar flavour to that of Cox's. Tree growth vigorous and does well in any region. Blossom shows some resistance to frost damage.

Lord Lambourne. A good dessert apple ripening mid October and keeps until the end of November. Fruits medium sized and flattish in shape, coloured greenish yellow with flushes of red and crimson stripes. Flesh soft juicy and sweet with a good aromatic flavour. Crops regularly and heavily on a manageable but vigorous tree. Grows well in any region and shows some resistance to frost damage.

Newton Wonder. A fine cooking apple which can be eaten fresh. Large flattish fruits that ripen in November and keep well. Coloured yellowish green with a light flush and red streaks. Firm crisp, juicy flesh with a slight astringent flavour. Tree growth vigorous and spreading that crops well

Scrumptious. An exceptional modern English early dessert apple, as the name suggests, the flavour is what sets this apple apart from other varieties. Sun-ripened fruit are bright red with a dappled touch of yellow and the white flesh is fairly crisp and very juicy. Fruiting in September, this mid season apple is self fertile, is resistant to frost damage and is suited to all areas of the UK.

Sunset. A Cox type dessert variety ripens in October and will keep through November. Fruits medium size, slightly flat, coloured orange-yellow with scarlet flush and streaks. Flesh firm, crisp and sweet with a lovely aromatic flavour. Heavy cropper. Tree growth moderately vigorous but compact. A good substitute for Cox in wetter areas. Shows resistance to scab and frost damage.

Worcester Pearmain. A very popular early variety, which is best eaten fresh in September. Fruits medium sized and slightly flat, coloured greenish yellow with extensive red flushing. Flesh crisp when fresh, very juicy and sweet with a good flavour if fully ripened. Tree growth moderately vigorous and upright that crops very well after establishment and with light pruning to induce fruit. Grows well in any region and shows good resistance to disease and frost.

APPLE POLLINATION CHART:

Apples within the same column or adjacent columns can generally pollinate each other, but please see key below for exceptions.

EARLY	MIDDLE	LATE	VERY LATE
Egremont Russet	Blenheim Orange <i>T</i>	Ellison's Orange	Newton Wonder
George Cave Bramley <i>T</i>	Golden Delicious		
Lord Lambourne	Charles Ross	Laxton's Superb	
Pippin <i>J K</i>	Cox's Orange		
	Discovery		
	Grenadier		
	James Grieve <i>D</i>		
Laxton's Epicure			
Laxton's Fortune			
	Lanes Prince Albert		
	Sunset <i>J</i>		
Worcester Pearmain			
	Jupiter <i>T K</i>		
	Katy <i>D E S</i>		
	Scrumptious <i>S</i>		
	Fiesta		

CODE

T Two other varieties **not** to pollinate

K Cox's and Jupiter are incompatible

D Katy and James Grieve are incompatible

K Cox's and Jupiter are incompatible

S New varieties show some self-fertility

E Katy and Worcester are incompatible

J Cox's and Sunset are incompatible

PEARS

Rootstock is usually Quince A (semi vigorous, 8-10ft) or Quince C (dwarfing, 6-8ft)

Bush 2/3 years: £29

Espaliers: £39.99 or £49.99 depending on size/age/number of tiers

Half Standard: £34 or £39 depending on size

Beth – Small pale green fruits that turn yellow, smooth skin, very sweet flesh. Good cropper. Harvest in Sept. Pollination group 3.

Beurre Hardy – Medium to large light greenfruits with a russet skin. Reliable cropper. Harvest in Oct. Pollination group 3.

Chojuro – Asian Pear. Golden fruit with sweet, butterscotch flavour, ripens in mid Sept. Pollinate by Williams Bon Chretien or Sensation.

Concorde – Medium/large fruits with green /yellow skin & russet patches. Compact grower, very heavy cropper. Harvest late Sept. Self fertile, group 4.

Conference – Medium/large fruits with green /yellow skin & russet patches. Very reliable. Harvest late Sept. Self fertile, Pollination group 3.

Doyenne du Comice – Medium/large fruits with green /yellow skin & red flush. Rich flavour & juicy. Early Oct, pollination group 4.

Sensation – Red skin & striking red foliage. Fine, juicy texture. Harvest mid Aug. Pollination group 3 (Doyenne du comice & Conference are best)

William's Bon Chretien – Good early variety, pale green fruit turning yellow. Reliable, very juicy & sweet. Late Aug, Pollination group 3

CHERRIES

Rootstock is usually Colt (Gisella 5 / dwarf available for some varieties)

Bush £29

Gisella 5/ dwarf varieties £34

Fan trained: £45

Morello – Dark red cooking cherry. Very reliable & hardy. The leading variety for preserving and bottling. Harvest late July. Self Fertile

Stella – Dessert variety. A large, dark red, reliable, sweet, juicy cherry with good flavour. Harvest in late July. Self fertile.

Sunburst – Dessert variety. Large fruit, sweet with great flavour and texture. Harvest in late July. Self fertile.

PLUMS & GAGES

Bush 2/3years £29 (Rootstock mainly St. Julian A) Fan trained: £45 Dwarf: £30 (Pixy rootstock)

Blue Tit – Dessert & cooking plum. An old variety with blue/black skin & yellow flesh. Self fertile, pollination group 2.

Czar - Dessert & cooking plum. Dark purple skin with sweet, yellow flesh. Heavy cropper & reliable. Harvest early Aug. Self fertile, pollination group 3.

Denniston Superb (also called **Imperial Gage**) Dessert. Very reliable cropper in late Aug. Greenish yellow with a red flush, sweet flesh. Self Fertile.

Edwards. Culinary/dessert. Large blue-black fruit, yellow juicy flesh. Reliable, heavy cropper. Harvest in Sept. Self Fertile.

Cambridge Greengage. Dessert. Golden yellow, juicy fruit. Reliable cropper. Harvest in Sept. Pollinates plums. Self fertile,

Marjories Seedling Culinary/dessert. Large oval, deep purple fruit. A good late cropper from mid – late Sept. Self fertile.

Merryweather (Damson) Culinary. Large damson. Heavy cropper. Harvest in late Sept. Self fertile

Oullins Golden Gage. Dessert. Large golden yellow fruit, sometimes flushed purple. Harvest in August. Self fertile

Shropshire Prune (Damson). Culinary. Small hedgerow damson, very reliable with intense flavour. Harvest mid Sept. Self fertile.

Victoria. Culinary/dessert. The best known plum! Great flavour & texture. Reliable cropper. Harvest late Aug. Self fertile.

PEACHES, APRICOTS & NECTARINES

All need a sheltered, sunny position. Cover trees from Jan – May to prevent peach leaf curl.

Some peach leaf curl resistant varieties often available please enquire.

PEACH Peregrine. Self-fertile. Fruits are white fleshed, ready August. Bush £34

Fan trained £48

PEACH Avalon Pride. Self fert. Good resistance to peach leaf curl. Fruits from Aug. Bush £34

NECTARINE Lord Napier. Self-fertile. Fruits are white fleshed, ready August. Bush £48

APRICOT Moorpark. Self-fertile. Deep orange flesh, ready August. Bush £34

Fan trained £48

APRICOT Alfred. Very hardy. Self fertile. Ready August. Bush £34

Fan trained £48

APRICOT Flavacot Very reliable, large fruit. Late flowering, so more frost resistant Bush £34
harvest August. Self fertile Fan trained £48

APRICOT Tomcot Very reliable, large fruit. Harvest mid July. Self fertile Bush £34

Fan trained £48

QUINCE - Usually on Quince A Rootstock

Meeches Prolific Fruits end Sept-Oct, turns golden when ripe. Gives Spring blossom. Self fertile. £29

Serbian Gold. Large, golden fruits. Harvest early Oct. Self fertile.	£29
Vranja. (Also known as Bereckzi) Large golden yellow fruit. Harvest Oct-Nov. Self fertile.	£29
MEDLAR. Nottingham. Fruits in Autumn, but best left to ripen until Winter. Semi weeping.	£35

SOFT & OTHER FRUIT & NUTS

	Price
BLACKBERRIES	
Black Butte. Very large fruit in July-Aug. Self fertile. Open canes for easy picking.	£7.99 each
Bedford Giant. Large fruit, strong grower. Early variety, fruits July-August	£7.99 each
Karaka Black, wonderful sweet taste, early picking, Early July - September	£7.99 each
Oregon Thornless Popular Variety. Late cropper, fruits August - September	£7.99 each
Waldo Thornless Compact growth (good for containers), fruits August - September	£7.99 each
LOGANBERRY Thornless Variety LY654. Not a great name, but great fruit from July - August	£7.50 each
TAYBERRY, Buckingham Cross between blackberry & raspberry, thornless, fruits July - August.	£9.50 each
Medana. Cross between blackberry & raspberry, thorned. Fruits July - August.	£8.99 each
BLACKCURRANTS	
Ben Connan Big fruits and great flavour, fruits mid July	£5.50 each
Ben Lomond. Large fruit, late flowering, some mildew resistance, fruits late July	£5.50 each
Ben Sarek. Compact growth, good for small gardens. Fruits mid July - August with a high yield.	£5.50 each
Ebony. Outstanding dessert variety with sweet fruits from early - mid July. Good mildew resistance.	£5.50 each
Titania. Large fruits from early July - early August. Vigorous growth. High yielding.	£5.50 each
BLUEBERRY, Various (two different varieties are best for successful pollination)	From £8.50
REDCURRANTS.	
Junifer Early fruiting from July - early September. Height: 1m	£5.50 each
Rovado Large fruit with a good flavour, from early August.	£5.50 each
WHITE CURRANT 'White Versailles'. Masses of pale yellow fruit from July.	£5.50 each
FIG Brown Turkey. Very fertile. Fruits from late Aug. Sweet flavour. Full sun. Contain roots.	From £11.99 each
GOOSEBERRIES 2-year bush.	
Captivator Red sweet fruit from late July into August. Almost thornless. Culinary & dessert	£6.50 each
Hinnomaki Green. Dessert. Large green fruit from mid July. Good resistance to mildew.	£6.99 each
Hinnomaki Red Dessert/Culinary. Fruits in July. New variety with good resistant to mildew.	£6.99 each
Hinnomaki Yellow. Dessert. Fruits in July. New variety with good resistant to mildew	£6.99 each
Invicta (green). Mid. Dessert/Culinary. Large pale green fruit. Ready late July	£6.50 each
RASPBERRIES. All containerised in 5's. Available from Autumn - Spring.	
Autumn Bliss Autumn fruiting. Heavy yield from late June until autumn frosts.	£8.50 per 5
Autumn Treasure. Autumn fruiting from Aug - Oct. Spine free, self supporting canes	£8.50 per 5
Glen Fyne Summer fruiting. Fruits from mid July.	£8.25 per 5
Joan J. Autumn fruiting. Fruits from late July - October	£8.50 per 5
Malling Minerva. Summer fruiting - Late June - late July	£8.50 per 5
Octavia. Summer fruiting - Mid July-Aug.	£8.50 per 5
Tulameen Summer fruiting. Fruits from Mid July - Aug. Exceptional yields, large fruits.	£7.50 per 5
KIWI FRUIT 'Jenny' (Actinidia) self pollinating	£7.50 each

GRAPES for outside and in the greenhouse**BLACK HAMBURG.** Popular greenhouse grape, producing fine purple-black fruit.

(Own roots).

£9.95 each

CHARDONNAY. White outdoor, dessert or wine making. (Grafted).

£9.95 each

CHAS. D'OR FONTAINBLEAU. Golden. Cold-house dessert. (Grafted).

£9.95 each

CHASSELAS ROSE ROYAL. Rose, cold house or outdoor on a sunny site.

Dessert. (Grafted).

£9.95 each

GAMAY. Red, cold house or outdoor on a sunny site, wine making. (Grafted).

£9.95 each

MUSCAT D'ALEXANDRIA. Golden, cold-house dessert. (Grafted).

£9.95 each

PHOENIX. White, outdoor, dessert or wine making. (Grafted).

£9.95 each

PINOT BLANC. White, outdoor, wine making. (Grafted).

£9.95 each

REGENT. Red, outdoor, dessert or wine making. (Grafted).

£9.95 each

RONDO. Red, outdoor, dessert or wine making. (Grafted).

£9.95 each

NUTS**COB NUTS: Kentish (Lamberts Filbert), Cosford, Merville de Bollwyller'.**

Cultivated hazel nut. Self sterile – need two different cultivars to pollinate.

Eg Kentish will pollinate other 2 varieties.

£14.95

ALMONDS Princess, Robijn, Sultane

£36 each

RHUBARB: Please note that rhubarb should not be harvested in the first year of planting**Glaskins Perpetual.** An excellent all round variety which is very quick growing

£3.99

Victoria A popular, traditional & easy variety which is heavily cropping

£3.99

Champagne. An early variety with pink stems which is ideal for forcing.

Reliable and easy to grow

£5.50

Raspberry Red. A recent cultivar with raspberry red stalks with no need for forcing.

Sweet flavour

£5.50

STRAWBERRY PLANTS. Pot grown only. Varieties may vary throughout the year**Cambridge Favourite.** 2nd early heavy cropper over long season (May – Sept)

1.50 each

Christine. Early season (June – early July)

1.50 each

Elsanta. Mid season. (Mid June – Mid July)

1.50 each

Florence. Late season (Crops from end July – end July)

1.50 each

Hapil. Mid season (Mid June – Mid July)

1.50 each

Honeye. Early season (June – early July)

1.50 each

Roman. Superb variety for hanging baskets. Everbear. Apple pink blossoms.

1.50 each

GROVES' FAMOUS

Victorian Garden Violets

READY SPRING & AUTUMN

We specialise in old garden violets and strive to bring back into fashion some of the varieties that have almost become extinct.

Please ask for our separate list to see our full selection – or visit our website for our full availability list with colour photos.

www.grovesnurseries.co.uk



We hold the national collection of *Viola odorata* & Parma violets.



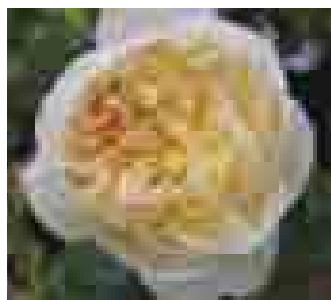
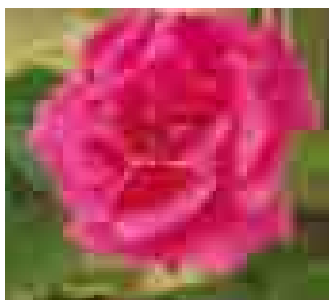
Have you got a Privilege Card?

If you are a regular user of our Garden Centre in Bridport and Little Groves Nursery in Beaminster then you can earn 3 points for every pound you spend with us. Each point is worth 1p and when you have saved up £5 worth or more you can spend them on whatever you like at either of our stores. It's our way of treating you for being such a good customer!



TEA ROOMS – try a nice cup of tea and a homemade cake or a superb Sunday Roast in our Citrus Grove Tea Room.

ROSES



Did you know that we stock over 120 different types of roses?

They are all potted and pruned in our own nursery, so we know they are the best possible quality. They can be bought in our Garden Centre (a smaller, select range is available at Little Groves), where they are laid out amongst our rose pergola or on in the internet from our online shop. Please ask for our separate rose catalogue.

PERENNIALS.

Here at Groves we tend to choose what we perceive to be the best varieties and value for our particular part of the country. We also like to keep the cost down by growing a large selection in our own nursery. As well as those listed below, we also stock a very large range of 9cm (£1.99 or 3 for £5.50) and 1L (£3.25) perennials in the Spring & Summer. If you are not sure what will do best for you come and have a wader around our paved area, there is usually one of our plantsmen on hand to help you. Numbers in brackets are approximate height in feet.

	Pot size	Each
ACANTHUS mollis. (3') Spikes of purple and white flowers in July-Sept.	2L	£4.99
ACHILLEA Salmon Beauty (2') Flat umbels of creamy salmon pink flowers in June - Sept	2L	£4.99
ACHILLEA Paprika (2') Flat umbels of hot orange-red flowers from June - Sept	2L	£4.99
ACHILLEA Teracotta (2.5') Flat umbels of pale orange flowers that fade to yellow	2L	£4.99
ACONITUM carmichaelii (5') Stately spires of azure blue flowers in late summer – autumn (please note that all parts of this plant are poisonous)	2L	£5.25
AGAPANTHUS africanus. (3') Blue flowers in July-August. .	3L	£8.50
AGAPANTHUS Blue Giant (3.5') Large mid-blue flowers in July	3L	£8.50
AGAPANTHUS Triumphator (3'). Dark blue flowers in July – August.	3L	£8.50
ALCEA Rosea Nigra. (Hollyhock) (5') Dark maroon flowers. July– Sept	2L	£4.99
ALCEA single Mixed (Hollyhock) (5') mixed colours of single flowers, July - Sept	2L	£4.99
ALCHEMILLA mollis. (1') Good ground cover, yellow-green flowers June-July.	2L	£4.99
ANEMONE Honorine Jobert (2 ½ ') Single white Sept-Oct.	2L	£5.50
ANEMONE Pretty Lady Diana (2') Single soft pink flowers in late summer, compact habit	2L	£6.99
ANEMONE Pretty Lady Emily (2') Semi – double pink flowers, compact habit	2L	£6.99
ANEMONE Queen Charlotte (3-4') Light bright pink flowers. Aug-Oct	2L	£5.50
ANEMONE Whirlwind (3') Semi double white flowers in autumn	2L	£5.50
ASTER Little Carlow (2') Single violet blue flowers from Aug – Oct. Sun – partial shade	2L	£4.99
ASTER Herbstschnee (4') Single white flowers from Aug - Nov	2L	£4.99
ASTER oblongifolius Fanny's (3') Masses of single blue-mauve flowers from Oct- Nov	2L	£4.99
ASTER x frikartii 'Monch' (3') Large lavender blue, single flowers from Aug - Sept	2L	£4.99
ASTILBE Amethyst (2') Lavender flowers, June - August	2L	£4.99
ASTILBE Bressingham Beauty (3'). Pink flowers in late summer	2L	£4.99
ASTILBE Diamant (2') White flowers. July – Aug.	2L	£4.99
ASTILBE Fanal (2') Red flowers, early to mid July. Dark reddish-green leaves	2L	£4.99
ASTILBE Peach Blossom (2') Peach pink fluffy flower heads in July. Prefers moist soils	2L	£4.99
ASTILBE Sprite (1.5) Dwarf Astilbe with pale pink fluffy flowers in summer	2L	£4.99
ASTILBE Straussenfeder (3') Pale pink-peach arching flowers in summer, AGM.	2L	£4.99
ASTILBE Youngique Pink (4.5') Silvery-pink flowers in early-mid summer	2L	£4.99
ASTRANTIA Primadonna (3') Soft pink pincushions flowers from June - August	2L	£5.50
ASTRANTIA Rosea (2') Pale pink pincushion flowers in late summer. Sun-part shade	2L	£5.50
ASTRANTIA Ruby Cloud (18"), Ruby red pincushion flowers from June – August.	2L	£5.50
BERGENIA Bressingham White. (18") White flowers in spring, evergreen leaves	2L	£4.99
BERGENIA Rotblum (2') Red flowers in spring, evergreen leaves turn red in autumn.	2L	£4.99
BRUNNERA macrophylla (20") Blue forget me knot flowers in spring, good for shade.	2L	£5.25
CAMPANULA Lodden Anna (4') pale, lilac-pink flowers through the summer	2L	£5.25
CAMPANULA Pritchards Variety (2') Dark, violet-blue trusses of open bell-shaped flowers throughout the summer.	2L	£5.25
CENTAUREA Amethyst in Snow (15") Striking white flowers with a purple centre.	2L	£5.50
CENTAUREA macrocephala. (4') Stunning Large yellow thistle like flowers in summer	2L	£5.25
CENTAUREA Montana (2'). Perennial Cornflower. Large blue flowers in late spring	2L	£4.99
CHELONE 'Obliqua' (2.5') Dark pink flowers. July-Sept. Gd for damp soil	2L	£4.99

	Pot size	Each
CIMICIFUGA White Pearl. (3') Tall, stately spires of white flowers in early autumn	2L	£5.50
CHRYSANTHEMUM (Leucanthemum) Mayfield Giant (2.5'). Large single white daisies in June – Aug.	2L	£4.99
CROCOSMIA Lucifer. (30") Searing paprika red flowers. Aug-Sept	2L	£4.99
DELPHINIUM Black Knight (4-6') Round dark-violet flowers. Velvet texture. May-June	1L	£3.25
DELPHINIUM Magic Fountains Mixed (2'). Dwarf variety, mixed colours. May-June	1L	£3.25
DIANTHUS mixed varieties. (Pinks) Summer flowering, sunny position	10cm	£2.99
DICENTRA spectabilis Alba (2ft.) White form of Bleeding Heart (below).	2L	£4.99
DICENTRA spectabilis (Bleeding Heart) (2.5')Pink & white heart shaped flowers from Mar	2L	£4.99
DIERAMA. (Angels Fishing Rods). Several varieties available	2L	£8.50
DIGITALIS Excelsior mixed (Foxgloves) (5') Mixed colours, Flowers early-mid summer.	1L	£3.25
DIGITALIS purpurea Apricot. (4-6') Apricot flowers May - August	2L	£4.99
ECHINACEA Harvest Moon (2.5') Golden orange petals, scented. Flowers June- Sept.	2L	£6.25
ECHINACEA paradoxa (2 .5') Yellow daisy-like flowers July – Oct	2L	£5.50
ECHINACEA pupurea (2.5') Pink daisy-like flowers. July – Sept.	2L	£5.25
ECHINACEA White Swan (2.5')White daisy-like flowers. July – Sept.	2L	£5.25
ECHINOPS Arctic Glow (4') Globular silver – white flowers in red stems in June - Aug	2L	£5.75
EPIMEDIUM rubrum (12") Dainty red flowers in Spring, shady position	2L	£6.99
EPIMEDIUM sulphureum (12")Dainty yellow flowers in Spring, shady position	2L	£6.99
EREMURUS Cleopatra (Foxtail Lily) (4') Orange flower, July-August	2L	£5.99
EREMURUS Ruiters Hybrids (5')Colourmix from shell pink to tangerine, June-Aug	2L	£5.99
ERIGERON Karvinskianus (1') Masses of small daisy like flowers from May - Oct	1L	£3.25
ERYNGIUM planum (12") (Sea Holly) Profusion of small, steely blue flowers July - Sept	2L	£4.99
EUPHORBIA amygdaloides purpurea (1 ¼ ') reddish leaves, yellow flowers. April - May	2L	£6.75
EUPHORBIA Fireglow (2') Flame-red head. May – June.	2L	£5.99
EUPHORBIA griffithii Dixter (2') Red flowers May – June	2L	£5.99
EUPHORBIA Robbiae (1 ½ ') Dark green hairless leaves. Tightspirals on top half of stems. Good in dry shade. May – June.	2L	£6.75
GAILLARDIA Burgunder (2 ¼ ') Deep red flowers from June – Sept.	2L	£4.99
GAILLARDIA Goblin (1ft) Compact red & yellow flowers in summer.	2L	£4.99
GERANIUM Blue Cloud. (60cm) Soft blue flowers with purple veins in summer	2L	£5.25
GERANIUM pratense var. stewartianum 'Elizabeth Yeo' Dark pink flowers	2L	£5.50
GERANIUM Johnson's Blue (15") Bright Blue saucer like flowers in June-July	2L	£4.99
GERANIUM renardii Tschelda (10-12") Pale blue flowers, deep veining. Velvety grey green leaves.	2L	£5.25
GERANIUM sylvaticum Mayflower. (75cm) Violet blue flowers with white centres	2L	£5.50
GERANIUM Samobor. (80cm) Small deep purple flowers in May- June. Suited to shade	2L	£4.99
GERANIUM Splish Splash (2.5')White flowers splashed with lavender, through Summer	2L	£5.50
GEUM Lady Strathdean (2') Nodding clusters of golden yellow flowers in Summer	2L	£4.99
GEUM Mrs Bradshaw (25")Double scarlet and double yellow flowers June-Sep	2L	£4.99
GEUM Prinses Juliana (2') Semi double, rich orange flowers in April –late June.	2L	£5.25
HELENIUM Festival (2') Deep orange & yellow blooms from June - August	2L	£5.50
HELENIUM Moerheim Beauty (3')Rich orange-red flowers,brown centre. Aug.	2L	£5.50
HELENIUM Rubinzweg (16") dark red, daisy-like flowers with dark centres. July-Sept	2L	£5.50
HELENIUM The Bishop (3') Yellow daisy like flowers Aug - Sept	2L	£5.50
HELENIUM Waltraut (3') Burnt yellow, marked with orange/red. July - Sept	2L	£5.50
HELENIUM Wyndley (3')Yellow flowers with splash of orange. June-Sept.	2L	£5.50
HELLEBORUS orientalis (1.5') Cream, pink, or deep red flowers Feb-April Sun-part shade.	2L	£7.25

	Pot size	Each
HEMEROCALLIS Crimson Pirate (3') Crimson-red flowers in Summer, sunny position.	2L	£4.99
HEMEROCALLIS Double Cutie (2') Double yellow flowers in June-July.		
Sun –part shade	2L	£5.99
HEMEROCALLIS Edge Ahead (2') Lavender coloured flowers with a dark centre	3L	£5.50
HEMEROCALLIS Frans Hals (2') Bright rust & orange bicoulour, creamy- orange midribs. Late July	2L	£4.99
HEMEROCALLIS Pandora's Box (1.5') yellow with orange centre. July – Sept.	2L	£5.99
HEUCHERA & HEUCHERELLA - a good variety of colours are available	1L	£4.99
	2L	£6.99
HOLLYHOCKS – See ALCEA		
HOSTAS Mixed varieties	1L	From £3.99
IRIS ensata Lady in Waiting (3') White with pinky-mauve blush. June-July.	2L	£6.25
IRIS ensata Sylvia's Masquerade (30") Large lavender-pink flowers. June-July. Soil moist to wet, in sun.		
	2L	£6.25
IRIS ensata Wine Ruffles (36") Wine-red blooms, yellow eye. Moist, well drained soil in sun.	2L	£6.25
LIATRIS spicata (3') Violet coloured flowers. Autumn	2L	£4.99
LIATRIS spicata alba (3') White flowers from late summer - autumn		£4.99
LIGULARIA Desdemona (3') Yellow-orange flowers June-July. Part to full shade.	3L	£5.75
LIGULARIA Przwalskii (3') Dark yellow flowers. June-Aug. Part to full shade.	3L	£5.75
LIGULARIA The Rocket (5') An exceptional Ligularia, this has tall, thin, flashy spires of bright yellow flowers on black stems. Flowers July-Aug. Moist, rich soil.	3L	£5.75
LILLIES – many hardy varieties available		
LUPINS Gallery mixed. (3.5') A mixture of blue, pink, red and yellow flower spikes, June – Sept	1L	£3.25
LYSIMACHIA Alexander (2') Yellow flower, variegated leaf June-Aug, for moist soil.	2L	£4.99
LYCHNIS coronaria (2.5'). Bright magenta flowers in late summer. Silver leaves.	1L	£3.25
MONARDA Beauty of Cobham (3.5') pale pink with slightly purple bracts, scented leaves	2L	£5.50
MONARDA Cambridge Scarlet (3') Striking, rich scarlet-red blooms July-Sept	2L	£5.50
MONARDA Pink Lace (1.5') Fluffy Pink flowers. July – Aug, scented leaves	2L	£6.99
MONARDA Scheewittchen (Snow White) (3') White flowers, scented leaves	2L	£5.50
NEPETA faassenii Six Hills Giant (2') Lavender blue. June-Oct. Favourite with bees	2L	£4.99
PAEONIA Bowl of Beauty (2.5') Pink petals and white centre. Flowers June -July	3L	£7.99
PAEONIA Dr Alexander Fleming (2') double, pink blossoms with curled inner petals	3L	£7.99
PAEONIA Duchess de Nemours (2.5') Ruffled white flowers, yellow-based inner petals.	3L	£7.99
PAEONIA Karl Rosenfeld (2') Large, fragrant, startling magenta blooms in Late May - June	3L	£7.99
PAEONIA Sarah Bernhardt (3') Double. Apple blossom pink flowers in June - July	3L	£7.99
PAPAVER Bolero (3') Bright purple flowers with a black heart in May - June	3L	£6.50
PAPAVER Mrs Perry (3') Salmon pink flowers in early summer	2L	£5.99
PAPAVER Patty's Plum (2.5') blackcurrant-purple flowers, May - July	2L	£6.75
PENSTEMON Amelia Jayne (2.5') Red flowers with a white throat, June-Oct	2L	£4.99
PENSTEMON Garnet (3') Deep wine-red flowers, June – Oct.	2L	£4.99
PENSTEMON Laura (3') Pink flowers with a white throat, June - Oct	2L	£4.99
PENSTEMON Sour Grapes (18") Greyish-blue/purple flowers, June/Oct	2L	£4.99
PERSICARIA superbum (1') Spikes of pale pink flowers in May – June. Gd for moist soils	2L	£5.25
PHLOX paniculata Mixed varieties (2.5') fragrant flowers, July-Oct	1L	£3.25
PINKS – see Dianthus		
POLYGONATUM multiflorum (2.5') clusters of green-edged, white flowers that hang like little bells	2L	£6.75

	Pot size	Each
PULMONARIA various varieties and sizes available	1L & 2L	From 3.99
PULSATILLA <i>vulgaris</i> (Pasque flower) – various cultivars available	1L	£3.25
ROSCOEIA <i>purpurea</i> (12") pale purple& white striped flowers in summer	1L	£3.25
RUDBECKIA <i>Goldstrum</i> (2') Single yellow daisy flowers with a black eye in Aug-Oct	2L	£4.99
SALVIA <i>superba</i> Blue Queen (2') Low growing blue/green foliage topped with spikes of rich blue/purple flowers in summer.	1L	£3.25
SALVIA <i>superba</i> Rose Queen (2') Low growing blue/green foliage topped with spikes of bright rose pink flowers in summer.	1L	£3.25
SALVIA - Many other varieties available at our 'Little Groves Nursery, Beaminster.	1L	£3.50
SCHIZOSTYLIS <i>coccinea</i> Prof. Barnard (18-24") Deep Pink flowers in autumn	2L	£4.99
SEDUM Autumn Joy (14") Masses of deep pink flowers from late summer - autumn	2L	£4.99
SEDUM <i>Matrona</i> (2') Rose pink flowers Jul – Oct above maroon tinted dark green leaves.	2L	£4.99
SIDALCEA <i>Brilliant</i> (30") Deep carmine rose-pink flowers July – Aug.	2L	£5.50
VERBENA <i>bonariensis</i> (4-6') Lilac-purple flowers. July to first frosts	2L	£4.99
VERONICA <i>gentianoides</i> (18") Spikes of pale blue,white or deep blue flowers. April-June	1L	£3.25
VERONICASTRUM <i>alba</i> (4') Long narrow spikes of white flowers. Sunny open position.	2L	£5.50
VERONICASTRUM Fascination Long narrow spikes of blue-mauve flowers in July-Aug. Sunny open position	2L	£6.50
VIOLETS (Sweet & Parma) Our speciality! Please ask for separate list or see our website. These are available throughout the year in our shade house.		

	Potted	Field Grown
WALLFLOWER (Potted and field grown)		
WALLFLOWER Cloth of Gold. 12-15". Golden flowers	1.99 Per x6	per 10 = £1.99 per 100 = £17
WALLFLOWER Fire King (flame) Rich scarlet flowers 12 – 15"	1.99 Per x6	per 10 = £1.99 per 100 = £17
WALLFLOWER Persian Carpet. Pastel shade mixture 12 – 15"	1.99 Per x6	per 10 = £1.99 per 100 = £17
WALLFLOWER Tom Thumb. Mixed colours 6"-9"	1.99 Per x6	per 10 = £1.99 per 100 = £17
WALLFLOWER Vulcan Deep crimson flowers 16"	1.99 Per x6	per 10 = £1.99 per 100 = £17

SPRING BEDDING PLANTS

All of the bedding below is grown at our own nursery and is available in May and June. Other potted patio and basket bedding is also available throughout the rest of the Summer months.

	Number of plants per strip/ pack	Price per strip/pack
AGERATUM Blue Blazer. F1 hybrid. 6 – 8". Compact. Deep blue.	6 pack	£2.99
ALYSSUM Carpet of Snow. White, scented. Ideal for edging	9 pack	£2.99
ANTIRRHINUMS (8-15") Mixed and individual colours	12 pack	£2.99
BEGONIAS, <i>semperflorens</i> . Popular for bedding. Pink, white, scarlet.	5 per strip	£1.85
CALENDULA Gypsy Festival. Compact, double flowers. Mixed.	6 pack	£2.99
CINERARIA <i>amaritime</i> Silver Dust	6 per strip	£1.85
CORNFLOWER Ball Blue. Ideal for cutting.	10 per strip	£1.85
COSMOS Ladybird. Mixed. Dwarf early semi-double flowers (orange, scarlet & yellow) throughout summer	10 per strip	£1.85

Spring Bedding Plants - *continued*

COSMOS Purity (4') Pure white flowers throughout summer	10 per strip	£1.85
COSMOS Sensation Mixed (3.5') Large colourful blooms	10 per strip	£1.85
DAHLIA Figaro (16") double mxd. One of the best annual for bedding	6 per strip	£1.85
DAHLIA Redskin (24") Double mxd. Bronze foliage	6 per strip	£1.85
GAZANIA Redstripe (10-12") Golden flowers with a red stripe.	1 per pot	75p
IMPATIENS (Bizzy Lizzies) - very limited this year due to the national outbreak of Downy Mildew	6 pack	£2.99
LARKSPUR. Giant Crown Mixed. tall mixed. Good cut flower.	6 per strip	£1.85
LOBELIA, Crystal Palace. Dark blue flowers and dark foliage.	6 per strip	£1.85
LOBELIA Cambridge Blue. Light blue flowers	6 per strip	£1.85
LOBELIA Mrs Clibran, dark blue flowers with white eye.	6 per strip	£1.85
LOBELIA Fountain Mixed. Mixture of blues, pinks, white.	6 per strip	£1.85
MARIGOLD African, Crackerjack. Double, mixed colours	10 per strip	£1.85
MARIGOLD African, Inca Gold (Dwarf) large double orange	1 per pot	75p
MARIGOLD Vanilla F1. Pale yellow, double flowers	1 per pot	75p
MARIGOLD (Dwarf French) Boy O'Boy. (6") F1. Very dwarf habit with large bright flowers. Mixed.	10 per strip	£1.85
MARIGOLD (Dwarf French) Yellow Boy (6") Double.	10 per strip	£1.85
MARIGOLD (Dwarf French) Orange Boy (6") Double.	10 per strip	£1.85
MARIGOLD (Dwarf French) Spanish Brocade (12") Gold & red	10 per strip	£1.85
NEMESIA. Carnival Mixed. (1') Showy mix of colours	10 per strip	£1.85
NICOTIANA Lime Green. (2') Lime green flowers.	6 packs	£2.99
NICOTIANA Nicki (15")Dwarf hybrid,mixed colours	6 packs	£2.99
NICOTIANA Sensation Mixed. (2') F2 hybrid. Mixed colours	6 packs	£2.99
NICOTIANA Sylvestris White trumpet (5') Large scentedwhite flowers	6 packs	£2.99
PANSY Swiss Giant Mixed Mixed colours	6 pack	£2.99
PANSY single colours: Yellow, blue, white & red blotch pansies	6 pack	£2.99
PETUNIA. Merlin Blue F1 hybrid, dwarf, compact and uniform.	6 per strip	£1.85
PETUNIA Merlin Pink F1 hybrid, dwarf, compact and uniform.	6 per strip	£1.85
PETUNIA Merlin Red F1 hybrid, dwarf, compact and uniform.	6 per strip	£1.85
PETUNIA Merlin White. F1 hybrid, dwarf, compact and uniform.	6 per strip	£1.85
PETUNIA Prism Sunshine. Early. Pale yellow F1 hybrid.	6 per strip	£1.85
PETUNIA mixed, single potted petunia	1 per pot	75p
SALVIA. Red Arrow. Rich scarlet flowers, beautiful dark green leaves.	6 pack	£2.99
STOCK Legacy. New ten-week variety. Mixed.	10 per strip	£1.85
TAGETES. Golden Gem. Fine edging plant. 8"	10 per strip	£1.85
TAGETES. Lemon Gem. Fine edging plant. 8"	10 per strip	£1.85
	Number	Price
	per pot	per pot
GERANIUMS Zonal. Varying shades of red, pink, orange, and white.	1	£2.99
GERANIUMS Ivy Leaf (trailing) in shades of red, pink and mauve.	1	£2.99
SWEET PEA Spencer Waved Mix. Mixed colours, climbing, scented	12	£1.50
SWEET PEAS Knee High. Mixed colours, compact bush type 12	12	£1.50
SWEET PEA Charlie's Angel, blue, scented climbing sweet pea	8	£1.75
SWEET PEA Lady Diana. Pale pink-violet, scented climbing sweet pea	8	£1.75
SWEET PEA Beaujolais. Rich maroon, scented climbing sweet pea	8	£1.75
SWEET PEA Diamond Jubilee. Pure white, climbing sweet pea	8	£1.75
SWEET PEA Kings High Scent. Cream with violet edges, scented	8	£1.75
BABY BEDDING: As well as those listed above we also sell a large range of Baby Bedding plants in early Spring, which can be brought on in a heated greenhouse/warm windowsill.		

VEGETABLES

We are pleased to see that growing your own vegetables is more popular than ever. The taste of fresh vegetables is completely different to those that have been through several markets and purchasing processes and many miles on the road. You can also rest assured that you have had control of their health and yours. Many people choose the chemical free option these days.

Our experimental Pottage garden is proving to be very successful. We were told several times that it served as an inspiration to others. We have decided to repeat it again this year, so why not come down and have a look around?!



D. Cast

	Time of sale	Number of plants per pot/strip	Price per pot
ASPARAGUS Gijnlim , bare rooted crowns	April	1	£1.99
AUBERGINE Moneymaker , Very early & productive	April	1	£1.40
BROAD BEAN Giant Exhibition Longpod	May	10	£1.40
FRENCH BEAN, CLIMBING Blue Lake	May	10	£1.65
FRENCH BEAN, DWARF Tendergreen	May	10	£1.65
RUNNER BEAN Enorma , Extra Long, straight pods	May	10	£1.65
BEETROOT, Bothardy , gd resistance to bolting, harvest from June	Spring	6	£1.99
BROCCOLI/ CALABRESE , harvest in spring	Late sum/ aut.	10	£1.99
BROCCOLI PURPLE SPROUTING , harvest in spring	Late sum/ aut.	10	£1.99
BROCCOLI WHITE SPROUTING , harvest in spring	Late sum/ aut.	10	£1.99
BRUSSEL SPROUT Early Half Tall , dwarf variety, harvest Aug-Sept	spr/ Early sum.	10	£1.99
BRUSSEL SPROUT Evesham Special , harvest Sept-Dec	spr/ Early sum	10	£1.99

Vegetables - continued

	Time of sale	Number of plants per pot/strip	Price per pot
BRUSSEL SPROUT Seven Hills. Late. Harvest Dec - March	spr/ Early sum	10	£1.99
BRUSSEL SPROUT Revenge. F1 hybrid, harvest Dec - March	spr/ Early sum	10	£1.99
CABBAGE – HARVESTINSRING (plant late sum/ aut)			
CABBAGE Flower of Spring. Medium size pointed head	Late sum/aut	10	£1.99
CABBAGE Wheelers Imperial. Bulky type	Late sum/aut	10	£1.99
CABBAGE – HARVEST IN SUMMER (plant in Spring)			
CABBAGE Golden Acre. Summer ball-head. Ready in 10 wks	Spring	10	£1.99
CABBAGE Red Drumhead. Red Cabbage. Plant in spr. or aut.	Spring	10	£1.99
CABBAGE Hispi. F1. Quick growing all yr, Pointed head	Spring	10	£1.99
CABBAGE – HARVEST IN WINTER (plant late sum/aut)			
CABBAGE Christmas Drumhead. Harvest Oct - Dec	Late sum/aut	10	£1.99
CABBAGE January King, Harvest Nov - Dec	Late sum/aut	10	£1.99
CABBAGE (SAVOY) Winter King F1. Harvest Dec - March	spring/summer	10	£1.99
CAULIFLOWER All year round (harvest in Aug - Sept)	spring	10	£1.99
CAULIFLOWER Aalsmeer (harvest following Spring)	spring	10	£1.99
CELERY, Golden Self Blanching, harvest from August	spring	6	£1.99
KALE (Borecole)Dwarf Curly Kale (harvest through Winter)	sum / aut.	10	£1.99
COURGETTE Zucchini. Green bushy variety	May	1	£1.60
COURGETTE Jemmer. Yellow fruits, compact plants	May	1	£1.60
CUCUMBER Burpless Tasty Green F1, outside or greenhouse	May	1	£1.60
CUCUMBER Femspot F1, Female, outside or greenhouse	May	1	£1.60
CUCUMBER Cucino F1, Female, mini cucumber in or outside	May	1	£1.60
LEEKs Musselburgh. Very reliable, crops through Winter.	May	25	£1.40
LETTUCE Suzan (butterhead) Crop through Summer.	spring/summer	10	£1.40
LETTUCE Little Gem (crisp type) Small heads, quick maturing	spring/summer	10	£1.40
LETTUCE Saladn (crisp type) Outstanding, green iceberg.	spring/summer	10	£1.40
LETTUCE Red Salad Bowl (Cut & come again) Wavy red leaves	spring/summer	10	£1.40
LETTUCE Green Salad Bowl (Cut & come again) Wavy green	spring/summer	10	£1.40
LETTUCE Arctic King. Hardy variety for autumn planting	summer/autumn	10	£1.40
MARROW Long Green Bush, good for limited space	May	1	£1.60
MARROW Long Green Trailing, trailing habit	May	1	£1.60
MELON Sweetheart, for under glass or sheltered spot outside	May	1	£1.60
ONION Bedfordshire Champion, harvest from September	May	25	£1.50
ONION Red Brunswick, red bulbs, harvest from August	May	25	£1.50
ONION White Lisbon, Salad(Spring) onion	summer	25	£1.50
PEA Feltham First (45cm) Good cold resistance, good early variety	Early spring	10	£1.40
PEA Alderman (1.5m) Old, reliable variety. Good cropper	spring	10	£1.40
PEPPERS – Bell and Chili, for glass or garden sun trap.	May	1	£1.50
PUMPKIN Jack O'Lantern Bright orange for Halloween	May	1	£1.60
TOMATO Alicante (greenhouse & outdoor)	April	1	£1.25
TOMATO Amateur bush, cherry (outdoor)	April	1	£1.25
TOMATO Beefsteak (greenhouse)	April	1	£1.25
TOMATO Gardeners Delight, cherry (greenhouse or outdoor)"	April	1	£1.25
TOMATO Moneymaker (greenhouse & outdoor)	April	1	£1.25
TOMATO Red Alert, bush cherry (outdoor)	April	1	£1.25
TOMATO Shirley (greenhouse)	April	1	£1.25
TOMATO Sungold, yellow cherry (greenhouse)	April	1	£1.25
TOMATO San Maranzo, plum (greenhouse)	April	1	£1.25
TOMATO Tumbler F1, Cherrybush variety (greenhouse & outdoor)			
Great for hanging baskets	April	1	£1.25
SQUASH, Butternut, harvest autumn/winter	spring	1	£1.60

HERBS

A large selection of 9cm (£1.50) and 1L (£2.75 - £2.99) herbs are available. Herbs are also a speciality of Little Groves Nursery in Beaminster, so if you're after some advice or something a little unusual why not visit Little Groves Nursery in Beaminster?

GENERAL GARDEN SUNDRIES

In our GARDEN CENTRE which is attached to the nursery, we have a wide range of garden requisites, which include:

COMPOSTS. John Innes, Arthur Bowers (including New Horizon), Levington, Westland, Vial Earth (Peat free range) and Groves own, including peat, peat free, organic and ericaceous composts, as well as chipped barks, mulches and manures. All at competitive prices. We now also supply some of these in cubic meter quantities.

SAND Washed – fine, medium, coarse and silver, **and GRAVELS** variety of sizes and colours. 25kg bags from £2.65

INSECTICIDES, FUNGICIDES & HERBICIDES in popular brands at competitive prices.

FERTILIZERS Unlike most Garden Centres we still stock a wide choice of loose fertilizers, which you can literally buy just a few grams to very competitively priced 25kg bags. We have customers who travel many miles for this service every year.

GARDEN ORNAMENTS. We have one of the largest selections of stone ornaments, ceramic pots, tubs, stone bird-baths etc. in Dorset.

PAVING SLABS: All sizes and colours in slabs and edging stone and **EDGING** materials

GARDEN FURNITURE & BARBEQUES: A large range available in season.

PET SHOP

We stock a large range of pet food, accessories & bedding from all your favourite Dog and Cat foods to Poultry, Pony & even Ostrich food – all you need for your small holding. We do bulk sizes as well as loose quantities so you can have as little or as much as you like to keep your furry, scaly & feathered friends happy! Phone or visit Chris, Jo or Emma for help or information.

SHEDS & GREENHOUSES

We stock 'B.S. Sectional' and 'Regency Garden' Buildings, as well as Greenhouses at competitive prices and have a good selection on our Show Site. Mark or Andy will be happy to help you with any green house and shed enquiries.

SEEDS

We carry a wide range of Flower and Vegetable seeds which are available for your selection in our shop. We are also Bridport's main agents for **THOMPSON & MORGAN** and **KINGS SEEDS**.

SEED POTATOES. Prices on application. Good selection. Ready early January – March. Available loose, for your convenience.

ONION SETS and SHALLOTS Ready for Autumn or Spring sowing. Available loose, for your convenience.

FLORAL DEPARTMENT

We are experienced in floral work, and can supply Funeral Sprays, Wreaths, Crosses, etc... also Presentation Bouquets and Buttonholes for local delivery. Please ask for details.

CUT FLOWERS

Always a good selection of fresh cut flowers, many grown on the nursery. We also send VIOLET POSIES by post during the season (Autumn – early Spring).

HOUSE PLANTS

This year we have refurbished our house plant area and we stock a wide range of pot plants for house decoration and suggest you visit our nurseries to make personal selection.

LAWN GRASS SEED MIXTURES

How to sow Grass Seed. Divide the ground into squares by means of pegs and string and the seed into as many portions, then sow the seed by hand, choosing a calm dry day, taking great care to spread it as evenly as possible. Cover the seed by lightly raking the surface in two directions and finish off with a light roller.

Quantity of Seed Required for a lawn. 1 kg. of grass seed will cover 20 sq.mtrs.

Sunday Best: (without rye grass) Makes a fine turf and will take wear, e.g. front and back lawns, cricket wickets, tennis courts and golf tees

Economy: (with rye grass) This includes a dwarf rye grass which makes it extremely hard wearing. Suitable for walkways, back lawns, banks etc.

Quicklawn: (with rye grass). A quick germinating mixture (approx. 10-14 days), with excellent wear tolerance. Good general purpose mix

Shady: A selection of woodland grasses that can cope with shady conditions.

OUR GIFT TOKENS

Solve Your Gift Problems

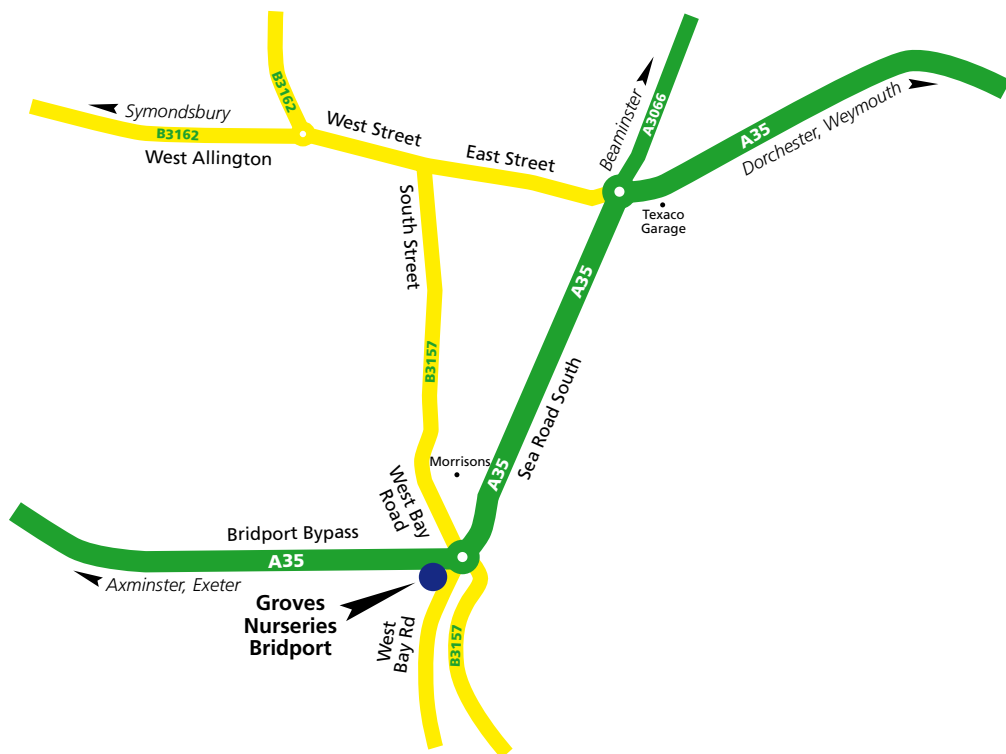
Groves Gift Card

The gardener's flexible friend

Fed up with having to spend the full value of you gift tokens? Unlike other gift token schemes, the Groves Gift Card gives you the flexibility to spend any amount up to the value of the gift card on anything you wish in our shop. Being the convenient size of a credit card, it sits neatly in your wallet and doesn't expire, so can spend it whenever you want on whatever you want. It comes with a choice of presentation cards making it the ideal gift for the "Got-it-all Gardener" When you have spent all the credit on the card you can even top it up.

We also accept & issue NATIONAL H.T.A. GARDEN GIFT TOKENS, which can be utilised throughout the country at all leading nurseries and garden centres.

How to find us in Bridport...



OPENING TIMES

Groves Garden Centre & Nursery, West Bay Road, Bridport, Dorset, DT6 4BA

Tel: 01308 422654 – Open 7 days a week

Monday – Saturday: 8.30 – 5pm (8.30am – 6pm April – June)

Sundays: 10.30am – 4.30pm

Little Groves Nursery, Tunnel Road, Beaminster, Dorset, DT8 3HB

Tel: 01308 862030

Spring & Summer: (March – September) Open 7 days a week, 10am – 5pm

Autumn & Winter: (October – February) Open Mon – Sat, 10am – 5pm

(January: Closed)

C. W. Groves and Son Ltd

The Nurseries, West Bay Road, Bridport, Dorset. DT6 4BA Tel: 01308 422654

e.mail – garden@grovesnurseries.co.uk

web – www.grovesnurseries.co.uk

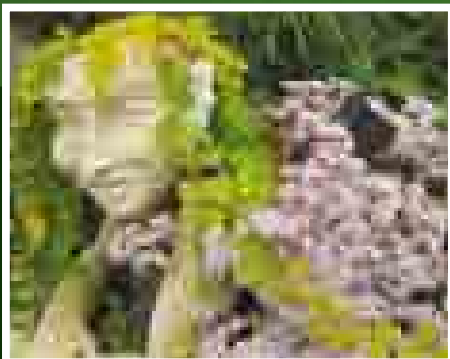


C.W. Groves and Son represents over 146 years of gardening history in West Dorset through six generations.

The Firm of C.W. Groves and Son was founded in 1866 by the great, great, great grandfather of the present Managing Director of the firm Charlie Groves in the village of Piddletrenthide near Dorchester, Dorset.

In the beginning its main concern was growing plants for seed distribution. Today there are two nurseries - one a fully stocked, modern Garden Centre and Nursery in Bridport, which also has a lovely restaurant. The other is a smaller, more traditional nursery in Beaminster (Little Groves Nursery).

Why not combine a visit to see us with a trip to the beautiful Dorset countryside and Jurassic coast.



Contact us:

C.W Groves and Son Ltd
West Bay Road
Bridport
Dorset
DT6 4BA

T: 01308 422654
E: garden@grovesnurseries.co.uk

Little Groves Nursery
Tunnel Road
Beaminster
Dorset
DT8 3HB

T: 01308 862030
E: littlegroves@grovesnurseries.co.uk

www.grovesnurseries.co.uk

